



1/9/2023  
Amended  
PA 5:15pm

BOARD OF ALDERMAN  
WORK SESSION AGENDA  
TUESDAY, JANUARY 10<sup>TH</sup>, 2023 at 6:30 p.m.

*AMENDED AGENDA 1/9/2023*

MEETING WILL BE RECORDED AND POSTED ON FACEBOOK - CITY OF BOLIVAR, MISSOURI

---

**ROLL CALL**

**PLEDGE OF ALLEGIANCE**

**MOTION TO ADOPT AGENDA**

**MAYORAL APPOINTMENT, Introductions, Presentations, Resolutions and Proclamations,  
Citizens Requests:**

\*Re-Appoint Jeff Miller as Board of Adjustment

1. John Forrester, Allgeier Martin and Associates update on golf course stormwater retention basin
2. Street light addition at Robyn Circle, south of Aldrich Rd
3. Confirm fund for \$100,000 expense for stormwater grant match
4. Airport well monitoring
5. Bid review for 2 Side-by-sides (1 for Parks/Cemetery)/ (1 for PD/FD)
6. Bid review for 72" Mower
7. Bid review for Rec Center floor scrubber
8. Park Rec refurbished equipment purchased
9. Bill No. 2023-01: An ordinance approving an updated investment policy for the City of Bolivar, Missouri
10. Bill No. 2023-02: An ordinance authorizing the city to contract with employees in need of commercial drivers license training for reimbursement program.
11. Bill No. 2023-03: An ordinance authorizing an amendment to the agreement with Liberty Utilities (Missouri Water) LLC, for lease of animal shelter facilities.
12. Bill No. 2023-04: An ordinance authorizing an amendment to the agreement with Liberty Utilities (Missouri Water) LLC, for lease of recycling facilities.
13. Accept City Administrator Retirement notice effective January 15<sup>th</sup>, 2023

*\*AMENDED AGENDA TO ADD THE FOLLOWING*

14. *Dunnegan Park Cabin Repairs*

\*IF UNABLE TO ACCESS FACEBOOK ACCOUNT, PLEASE CONTACT CITY CLERK FOR ADDITIONAL OPTIONS\*

**#wherelibertyflows**

If you have a need for special accommodations,  
Please contact the City Clerk's office 24 hours prior to the meeting.



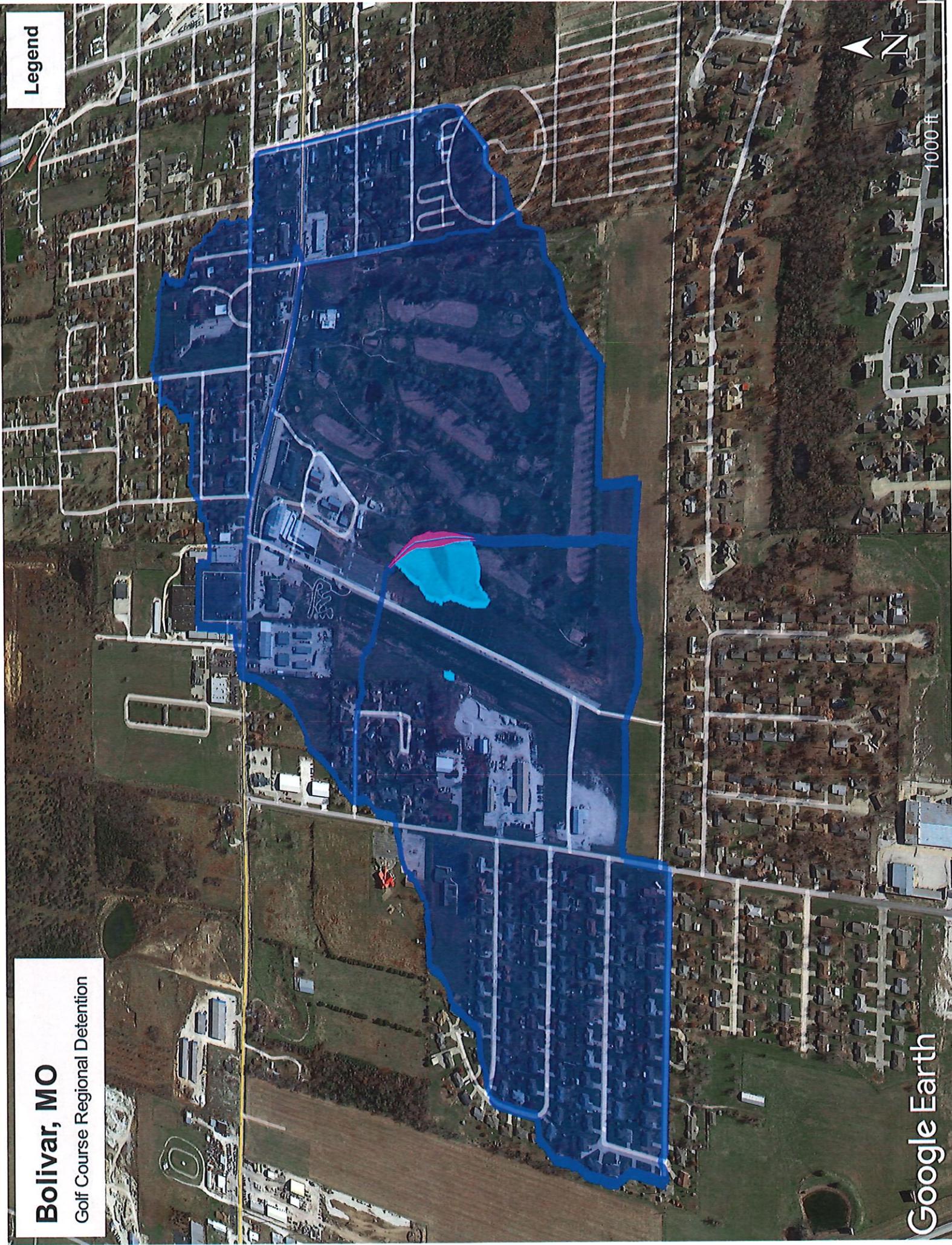
# Bolivar, MO

Golf Course Regional Detention

Legend

Google Earth

1000 ft





[illegible]

**QUARLES SUPPLY CO. BOLIVAR**  
**3251 S. SPRINGFIELD AVE.**  
**BOLIVAR, MO 65613**  
**417-777-2391 Fax 417-777-2393**

# Quotation

QUOTE DATE	QUOTE NUMBER
12/28/22	S2567687
ORDER TO: QUARLES SUPPLY CO. BOLIVAR 3251 S. SPRINGFIELD AVE. BOLIVAR, MO 65613 417-777-2391 Fax 417-777-2393	PAGE NO.  1

QUOTE TO:  
CITY OF BOLIVAR  
P O BOX 9  
BOLIVAR, MO 65613

SHIP TO:  
CITY OF BOLIVAR  
P O BOX 9  
BOLIVAR, MO 65613

CUSTOMER NUMBER	CUSTOMER ORDER NUMBER	RELEASE NUMBER	SALESPERSON	
1402	RTV QUOTE		HOUSE	
WRITER	SHIP VIA	TERMS	SHIP DATE	FREIGHT
CLAY QUARLES	PK PICK-UP	NET 10TH PROX	12/28/22	No
ORDER QTY	PART NO	DESCRIPTION	UNIT PRICE	NET AMOUNT
2ea		RTV520-H KUBOTA UTILITY VEHICLE - ORANGE W/HEAVY TIRES *2 YEAR WARRANTY OR 2,000 HOURS	12000.000	24000.00
2ea		K7311-99280 WINDSHIELD KUBOTA	386.000	772.00
2ea		K7311-99290 LOWER WINDSHIELD PANEL KUBOTA	225.000	450.00
TAXES NOT INCLUDED				
BY TAKING DELIVERY OF THIS PRODUCT, YOU AGREE: (1) THE ONLY WARRANTY INCLUDED WITH THE PRODUCT IS THE MANUFACTURER'S WARRANTY, IF ANY; (2) NEITHER QUARLES NOR ITS SUPPLIERS MAKE ANY EXPRESS OR IMPLIED WARRANTY, AND EACH DISCLAIMS THE WARRANTIES OF FITNESS FOR PARTICULAR PURPOSE AND MERCHANTABILITY; (3) THE PRODUCT IS SUBJECT TO ALL INSTRUCTIONS, TERMS AND CONDITIONS, TERMS OF USE, OR TERMS A OF SALE REFERENCED OF PROVIDED BY MANUFACTURER OF SUPPLIER, WHICH ARE INCORPORATED BY REFERENCE; AND (4) NEITHER QUARLES OR ITS SUPPLIERS ARE LIABLE FOR ANY PUNITIVE, EXEMPLARY OR OTHER SPECIAL DAMAGES, OR INDIRECT OR CONSEQUENTIAL DAMAGES, NOR ARE THEY LIABLE FOR ANY DAMAGES IN EXCESS OF THE AMOUNT PAID FOR THE APPLICABLE PRODUCT.				
THIS IS A QUOTATION Prices subject to change without notice. APPLICABLE TAXES EXTRA !			Subtotal S&H CHGS	25222.00 0.00
			Amount Due	25222.00

December 21<sup>st</sup>, 2022

Bidders may submit bids for the following minimum bid specification for two Utility vehicles (UTV). Specifications for submitted vehicles should not go below minimum specs listed below, but anything over listed requirements are allowed. The City of Bolivar will choose the BEST bid and is not limited to the lowest bid. No bids will be accepted after January 9<sup>th</sup>, 2023 at 2:00 p.m. The City of Bolivar reserves the right to reject any and all proposals and to waive technicalities.

**Utility Vehicle Specifications:**

- Four stroke engine between 500-750cc
- Electronic fuel injection
- Automatic transmission
- Four-wheel drive selectable
- One bench seat
- Back cargo area, please list additional cost for a power dump bed: N/A
- Include headlights and taillights
- Include windshield and hard top

Please include warranty details in bid documents

Please include delivery timeline

Price per vehicle: \$12,611

Total Price for Two vehicles: \$25,222

Estimated delivery expectancy: February 2023

Sealed bids should be submitted in a SEALED envelope to:

Utility Vehicle Bid  
Bolivar City Clerk  
PO Box 9  
Bolivar, MO 65613

CROWN



345 S. Main Ave, PO Box 9, • Bolivar, Missouri 65613  
Telephone (417)326-2489 • Fax (417) 777-3212  
www.bolivar.mo.us

December 21<sup>st</sup>, 2022

Bidders may submit bids for the following minimum bid specification for two Utility vehicles (UTV). Specifications for submitted vehicles should not go below minimum specs listed below, but anything over listed requirements are allowed. The City of Bolivar will choose the BEST bid and is not limited to the lowest bid. No bids will be accepted after January 9<sup>th</sup>, 2023 at 2:00 p.m. The City of Bolivar reserves the right to reject any and all proposals and to waive technicalities.

### Utility Vehicle Specifications:

- Four stroke engine between 500-750cc
- Electronic fuel injection
- Automatic transmission
- Four-wheel drive selectable
- One bench seat
- Back cargo area, please list additional cost for a power dump bed: \$850.00 installed
- Include headlights and taillights
- Include windshield and hard top

Please include warranty details in bid documents

Please include delivery timeline

Price per vehicle: \$10980.00

Total Price for Two vehicles: \$21960.00

Estimated delivery expectancy: 14 Days

Sealed bids should be submitted in a SEALED envelope to:

Utility Vehicle Bid  
Bolivar City Clerk  
PO Box 9  
Bolivar, MO 65613

## THE CHALLENGER™ M SERIES

The Challenger M Series offers the essentials in a no-nonsense crossover that's ready to ride. With strong hauling capability, simplified A-arm guards and on-demand four-wheel drive versatility, it's high-quality performance in an accessible package.

## STANDARD ACCESSORIES AND FEATURES



## M 550

Engine	546cc EFI liquid-cooled
Speed	Up to 45 mph
Transmission	On-demand 2WD / 4WD, automatic CVT
Total Payload	1,000 lbs
Bed Capacity	500 lbs
Towing Capacity	1,200 lbs
Ground Clearance	12"
Seats	2
Steering	Rack-and-pinion, tilting steering wheel
Differential	Selectable locking front / non-selectable full-time locked rear
Suspension Travel	9" front / 8.1" rear
Available Colors	Black,

# CROWN

## Power & Equipment

## Darren Redd

Ag Sales

Crown Power &amp; Equipment

3815 S. Springfield Ave.

Bolivar, MO 65613

www.crown-power.com

(417) 327-2027

(417) 326-7641

dredd@crown-power.com



### MAKE IT YOUR OWN WITH ATTACHMENTS & ACCESSORIES

## Engine

**Engine Brand**  
Hisun EFI OHV

**Engine Displacement**  
546cc

**Fuel Type**  
Gasoline

**Fuel Tank Capacity**  
7.6 US gal. / 28.8 L

**Lubrication**  
Wet sump

**Air Cleaner**  
Dual-element

**Fuel Delivery**  
EFI (Electronic Fuel Injection)

## Drive System

**Transmission**  
Enclosed CVT

**Speed**  
0 - 45 mph (72 kph)

**Drive System**  
On-Demand 4WD

**Rear Differential Lock**  
Non-Selectable

## Warranty

**Warranty**  
1-Year Limited Powertrain and Vehicle Warranty

## Chassis

**Bumper**  
Heavy-duty Steel tube



M  
d / Trail

**Front Wheels**

26" x 9-14"

**Rear Wheels**

26" x 11-14"

**Travel**

9" Front / 8" Rear

**Rear Tires**

26" x 9-14"

**Front Tires**

26" x 11-14"

**Exterior**

**Mirrors**

No

**Roof**

No

**Rear Brake Lights**

Standard

**Turn Signals**

Standard

**Doors**

Steel Tube

**Towing**

**Towing/Payload**

1,100 lbs.

**Towing Capacity**

1,200 lbs.

**Minimum Ground Clearance**

11"

**Winch**

No

**Cargo Bed Payload**

1100 lbs.

## Dimensions

**Dimensions L/W/H**

118" x 61.75" x 76.75"

**Weight (approx.)**

1,456 lbs.

**Wheelbase**

76.8"

## Additional Specifications

**Headlight(s)**

LED High Illumination

**Model Number**

37DZ7DPP710

**OZARKGOLFCARS**  
and Utility Vehicles

**4651 N. 20<sup>th</sup> Street**  
**Ozark, MO 65721**  
**(417) 581-2644**

## UTILITY VEHICLE BID

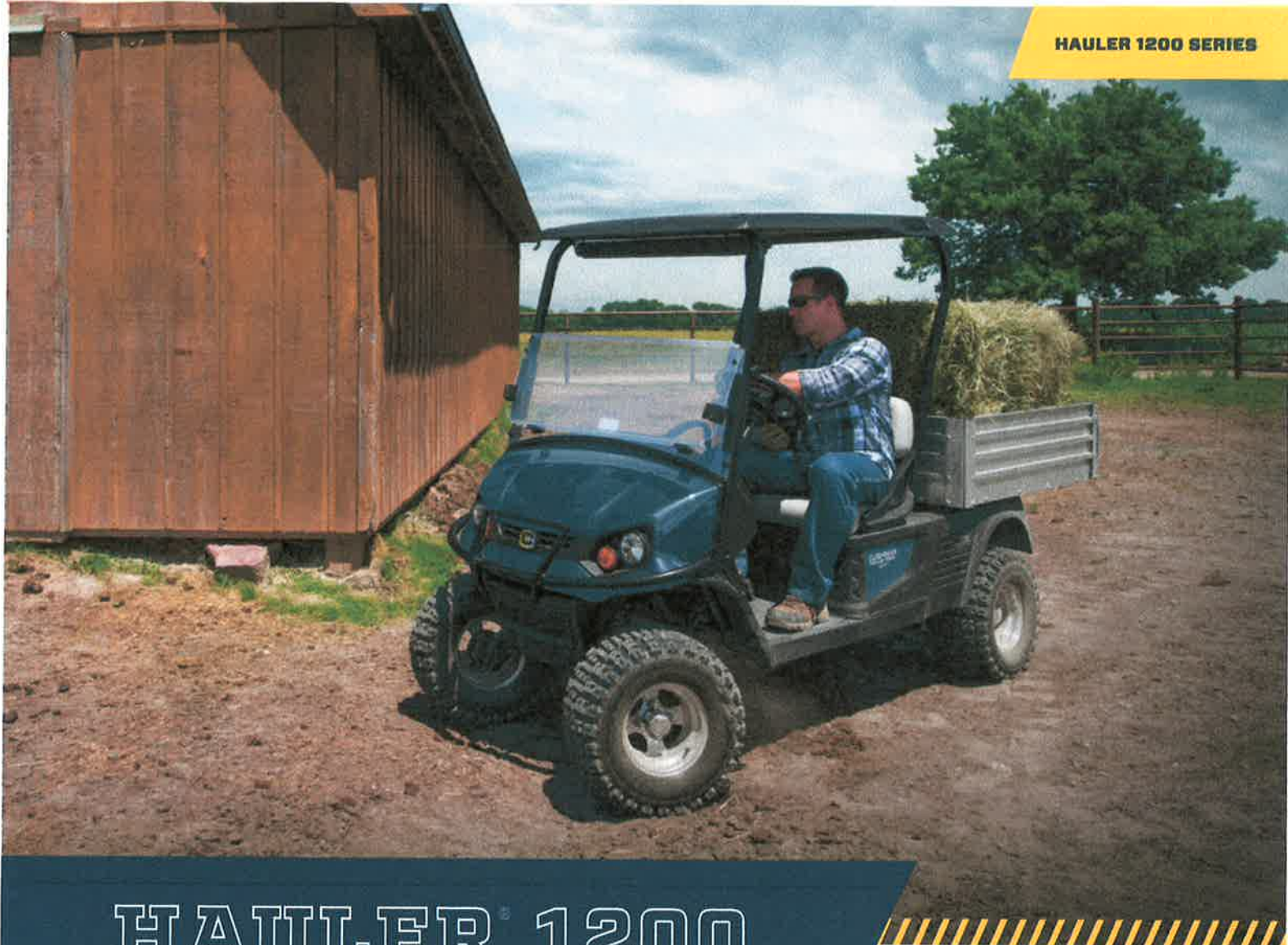
**Customer: Bolivar City Clerk**  
**PO Box 9**  
**Bolivar, MO 65613**

Date: 1/5/2023

QUANTITY	DESCRIPTION	MSRP	OMNIA DISCOUNT
1	2023 CUSHMAN HAULER 1200X EFI	\$11,561	\$8670.75
1	54" CANOPY	\$450	\$337.50
1	FOLD-DOWN WINDSHIELD	\$167	\$125.25
1	FREIGHT		\$501.00
	• This Model is not Four-Wheel Drive Equipped		
	• Kawasaki 401cc Engine		
	• Electric Bed Lift an Additional \$365.25		
	• 2-Year Factory Warranty		
	• ETA 3 <sup>rd</sup> Quarter 2023		
		SUB TOTAL	\$9,634.50
		MO SALES TAX 5.975%	EXEMPT
		TOTAL	\$9,634.50

If you have any questions concerning this quotation, contact Bryce Hollowell: 417-581-2644 | [Sales@OzarkGolfCars.com](mailto:Sales@OzarkGolfCars.com)





# HAULER<sup>®</sup> 1200 SERIES

## NEVER BE OUTLASTED.

The Hauler 1200 Series is equipped to handle any job within your facility. A large bed providing essential functionality can easily be converted for any task. Featuring integrated tie-downs, a 12 cubic-foot cargo bed, a full line of additional accessories and higher ground clearance with the Hauler 1200X, transporting tools and supplies has never been easier. Your work is unforgiving, expect nothing less than the best with the Hauler 1200 Series.

**13.5 HP**  
EFI GAS

**12 CU FT**  
CARGO BED

**1500LB / 1200LB**  
TOWING CAPACITY

**1200LB / 900LB**  
LOAD CAPACITY





HAULER 1200



HAULER 1200X

## OPTIONS & ACCESSORIES

- Limited Slip Differential
- 4-Wheel Mechanical Brakes
- Locking Glove Box
- Bed Dividers
- Floor Mount Attachment
- Windshield
- Canopy
- Electric Bed Lift
- 15 cu-ft Aluminum Bed with L-Track System
- Long-Handled Tool Holders
- Radio Holder
- Cargo Mesh Netting
- LED Headlights - High/Low Beam
- LED Taillights/Brake Lights
- Ladder/Hoop Rack (Aluminum Bed Only)
- Rearview Mirror
- USB Port
- Unique Key Switch
- Side Body Color
- Weather Enclosure
- ROPS-Certified Cab
- Ball Cage
- Hubcaps
- Standard Rear Receiver Hitch
- Fuel/Oil Gauge

**CUSHMAN.COM**

# HAULER® 1200 / SERIES

## BODY & CHASSIS

	HAULER 1200	HAULER 1200X
FRAME	Welded Steel with E-Coat & DuraShield™ Powder Coat	
BODY & FINISH	Injection Molded TPO	
STANDARD COLOR	Forest Green	

## DIMENSIONS

OVERALL LENGTH	119 in (302 cm)	
OVERALL WIDTH	49.4 in (125.5 cm)	
OVERALL HEIGHT W/CANOPY	70.5 in (179.1 cm)	77 in (195.6 cm)
WHEEL BASE	76.8 in (195.1 cm)	77.5 in (196.9 cm)
FRONT WHEEL TRACK	35 in (88.9 cm)	38.0 in (96.5 cm)
REAR WHEEL TRACK	38.5 in (97.8 cm)	
GROUND CLEARANCE	3.5 in (8.9 cm)	7 in (17.8 cm)
CARGO BOX CAPACITY	12 cu ft (0.34m <sup>3</sup> )	
CARGO BOX DIMENSIONS	39 in (L) x 44 in (W) x 12 in (D) (99 cm x 111.8 cm x 30.5 cm)	
CARGO BOX MATERIAL	Roto-Molded Polyethylene	

## POWER

POWER TRAIN	4-Cycle, 24.5 ci (401cc)	
VALVE TRAIN	Single Cylinder OHV	
HORSEPOWER (KW)	13.5 hp (10.1 kW)	
ELECTRICAL SYSTEM	Starter/Generator, Solid State Reg.	
BATTERY (QTY/TYPER)	One, 12V Maintenance Free	
KEY OR PEDAL START	Pedal	
AIR CLEANER	Replaceable Industrial Rated Dry Cartridge	
LUBRICATION	Pressurized Oil System	
OIL FILTER	Spin-On	
COOLING SYSTEM	Air Cooled	
FUEL CAPACITY	6.65 Gallon (25 L) tank	
DRIVE TRAIN	Continuously Variable Transmission	
TRANSAXLE	Differential w/ Helical Gears	
GEAR SELECTION	Forward - Reverse	
REAR AXLE RATIO	11.47:1 (Forward) 14.35:1 (Reverse)	

## PERFORMANCE

SEATING CAPACITY	2-Person	
CURB WEIGHT	980 lb (445 kg)	1003 lb (455 kg)
BED LOAD CAPACITY	800 lb (363 kg)	500 lb (227 kg)
VEHICLE LOAD CAPACITY	1200 lb (545 kg)	900 lb (408 kg)
SPEED	14.5 mph ± 0.5 mph (23.3 kph ± 0.8 kph)	16.5 mph ± 0.5 mph (26.6 kph ± 0.8 kph)
TOWING CAPACITY	1500 lb (680 kg) max	1200 lb (544 kg) max
OUTSIDE CLEARANCE CIRCLE	21.5 ft (6.6 m)	23.5 ft (7.2 m)

## STEERING & SUSPENSION

STEERING	Self-Compensating Rack & Pinion	
SUSPENSION	Leaf Springs w/ Hydraulic Shock Absorbers	
SERVICE BRAKE	Dual Rear Wheel Mechanical, Self-Adjusting Drum	
PARKING BRAKE	Self-Compensating, Single-Point Engagement	
TIRES (FRONT & REAR)	18 x 8.5 - 8 (6 - Ply Tires)	20 x 8-10 (6 - Ply Tires)



345 S. Main Ave, PO Box 9, • Bolivar, Missouri 65613  
Telephone (417)326-2489 • Fax (417) 777-3212  
www.bolivar.mo.us

December 21<sup>st</sup>, 2022

Bidders may submit bids for the following minimum bid specification for two Utility vehicles (UTV). Specifications for submitted vehicles should not go below minimum specs listed below, but anything over listed requirements are allowed. The City of Bolivar will choose the BEST bid and is not limited to the lowest bid. No bids will be accepted after January 9<sup>th</sup>, 2023 at 2:00 p.m. The City of Bolivar reserves the right to reject any and all proposals and to waive technicalities.

#### Utility Vehicle Specifications:

-Four stroke engine between 500-750cc

-Electronic fuel injection

-Automatic transmission

-Four-wheel drive selectable

-One bench seat

-Back cargo area, please list additional cost for a power dump bed: \$365.25

-Include headlights and taillights

-Include windshield and hard top

Please include warranty details in bid documents

Please include delivery timeline

Price per vehicle: \$9634.50

Total Price for Two vehicles: \$19,269.00

Estimated delivery expectancy: 3<sup>rd</sup> Qtr 2023

Sealed bids should be submitted in a SEALED envelope to:

Utility Vehicle Bid  
Bolivar City Clerk  
PO Box 9  
Bolivar, MO 65613



345 S. Main Ave, PO Box 9, • Bolivar, Missouri 65613  
Telephone (417)326-2489 • Fax (417) 777-3212  
www.bolivar.mo.us

December 21<sup>st</sup>, 2022

Bidders may submit bids for the following minimum bid specification for two Utility vehicles (UTV). Specifications for submitted vehicles should not go below minimum specs listed below, but anything over listed requirements are allowed. The City of Bolivar will choose the BEST bid and is not limited to the lowest bid. No bids will be accepted after January 9<sup>th</sup>, 2023 at 2:00 p.m. The City of Bolivar reserves the right to reject any and all proposals and to waive technicalities.

#### Utility Vehicle Specifications:

- Four stroke engine between 500-750cc
- Electronic fuel injection
- Automatic transmission
- Four-wheel drive selectable
- One bench seat

-Back cargo area, please list additional cost for a power dump bed:

\$1022.91

-Include headlights and taillights

-Include windshield and hard top

Please include warranty details in bid documents

1 yr or 1000 HRS whichever comes 1st

Please include delivery timeline

Price per vehicle: \$17,500

Total Price for Two vehicles: \$35,000.00

Estimated delivery expectancy: 1 unit in stock at Lockwood, other unit would be June 22, 2023

Sealed bids should be submitted in a SEALED envelope to:

Utility Vehicle Bid  
Bolivar City Clerk  
PO Box 9  
Bolivar, MO 65613

Quote Id: 27991090

---

Prepared For:  
**CITY OF BOLIVAR**



Prepared By: **Seth Rock**

HERITAGE TRACTOR, INC.  
208 Route A  
Lockwood, MO 65682

Tel: 417-232-4578  
Fax: 417-232-4116  
Email: [srock@heritagetractor.com](mailto:srock@heritagetractor.com)





JOHN DEERE

*Heritage*  
TRACTOR

---

**Quote Summary**

**Prepared For:**

CITY OF BOLIVAR  
345 S MAIN AVE  
BOLIVAR, MO 65613  
astanek@bolivar.mo.us

**Prepared By:**

Seth Rock  
HERITAGE TRACTOR, INC.  
208 Route A  
Lockwood, MO 65682  
Phone: 417-232-4578  
srock@heritagetractor.com

**Quote Id:** 27991090

**Created On:** 29 December 2022

**Last Modified On:** 04 January 2023

**Expiration Date:** 30 December 2022

---

Equipment Summary	Suggested List	Selling Price	Qty	Extended
JOHN DEERE GATOR™ XUV590E (Model Year 2023)	\$ 17,570.47	\$ 17,500.00 X	1 =	\$ 17,500.00
<b>Equipment Total</b>				<b>\$ 17,500.00</b>

---

**Quote Summary**

---

Equipment Total	\$ 17,500.00
SubTotal	\$ 17,500.00
Est. Service Agreement Tax	\$ 0.00
Total	\$ 17,500.00
Down Payment	(0.00)
Rental Applied	(0.00)
<b>Balance Due</b>	<b>\$ 17,500.00</b>

Salesperson : X \_\_\_\_\_

Accepted By : X \_\_\_\_\_

---

Confidential

**JOHN DEERE**

# Selling Equipment

*Heritage*  
TRACTOR

Quote Id: 27991090

Customer: CITY OF BOLIVAR

**JOHN DEERE GATOR™ XUV590E (Model Year 2023)**

Hours:

Stock Number:

**Suggested List**

\$ 17,570.47

**Selling Price**

\$ 17,500.00

**Extended**

Code	Description	Qty	Unit	Extended
590AM	GATOR™ XUV590E (Model Year 2023)	1	\$ 14,999.00	\$ 14,999.00

**Standard Options - Per Unit**

001A	US / CANADA	1	\$ 0.00	\$ 0.00
0505	Build to Order	1	\$ 0.00	\$ 0.00
1000	25" Terra Hawk all-terrain tires on 12" Yellow Steel Wheels	1	\$ 0.00	\$ 0.00
2007	Bench Seat - Black	1	\$ 0.00	\$ 0.00
2302	Standard Tenneco Twin Tube Shock	1	\$ 0.00	\$ 0.00
2500	Green & Yellow	1	\$ 0.00	\$ 0.00
3002	Cargo Box without Box Rails	1	\$ 0.00	\$ 0.00
3100	Manual Lift	1	\$ 0.00	\$ 0.00
4002	OPS with Nets & Brake/Taillights	1	\$ 0.00	\$ 0.00
4030	Black Roof	1	\$ 443.00	\$ 443.00
4149	Less Packages	1	\$ 0.00	\$ 0.00
<b>Standard Options Total</b>				<b>\$ 443.00</b>

**Dealer Attachments**

BM23373	Full No-Scratch Flip-Open Windshield	1	\$ 792.87	\$ 792.87
BUC10807	Brake and Tail Light Kit	1	\$ 85.60	\$ 85.60
<b>Dealer Attachments Total</b>				<b>\$ 878.47</b>

**Value Added Services Total****\$ 0.00****Other Charges**

Freight	1	\$ 950.00	\$ 950.00
Setup	1	\$ 300.00	\$ 300.00
<b>Other Charges Total</b>			<b>\$ 1,250.00</b>

**Suggested Price****\$ 17,570.47****Customer Discounts**

<b>Customer Discounts Total</b>			<b>\$ -70.47</b>	<b>\$ -70.47</b>
---------------------------------	--	--	------------------	------------------

<b>Total Selling Price</b>	<b>\$ 17,500.00</b>
----------------------------	---------------------

MODEL	Gator XUV590E (Model year 2023)	Select a Model to Compare
-------	---------------------------------	---------------------------

## Key Specs

Engine power	23.8 kW 32 hp	
Cargo box dimensions	820 x 1209 x 297 mm 32.3 x 47.6 x 11.7 in.	
Cargo box capacity (weight)	227 kg 500 lb	
Towing capacity	680 kg 1500 lb	
Front suspension	Fully independent dual A-arm with adjustable coil over shocks, 203 mm (8 in.) travel, anti-roll bar	
Rear suspension	Fully independent with lower A-arm and upper camber link with adjustable coil over shocks, 203 mm (8 in.) travel	
Final drive	Park, high, low, neutral, reverse transaxle	
Four wheel drive	Dash switch actuated four-wheel drive system	
Fuel capacity	28 L 7.4 U.S. gal.	

Engine		
Type	4-cycle gas, inline-twin, electronic fuel injection (EFI), overhead valves (OHV)	
Displacement	586 cc	
Power	23.8 kW 32 hp	
Cooling system	Liquid cooled	

## Drivetrain

Transmission	Continuously Variable Transmission (CVT) with clutch enclosure
Final drive	Park, high, low, neutral, reverse transaxle
Four wheel drive	Dash switch actuated four-wheel drive system
Traction assist	Limited slip front differential, Positive locking, switch actuated rear differential lock
Descent control	No

## Suspension

Front	Fully independent dual A-arm with adjustable coil over shocks, 203 mm (8 in.) travel, anti-roll bar
Rear	Fully independent with lower A-arm and upper camber link with adjustable coil over shocks, 203 mm (8 in.) travel

## Brakes

Type	196 mm (7.7 in.) ventilated four-wheel stainless steel disc brakes with hydraulic 34.93 mm (1.375 in.) diameter twin-piston calipers
Park brake	Park in-transmission

## Tires / Wheels

Front	25x8-12 Terra Hawk all-terrain on steel wheels 26x8-14 Maxxis® Bighorn® 2.0 extreme terrain on steel wheels
Rear	25x10-12 Terra Hawk all-terrain on steel wheels 26x10-14 Maxxis Bighorn 2.0 extreme terrain on steel wheels



## Tires / Wheels

### Dimensions / Capacities

Wheelbase	1.86 m 72.8 in.
Weight	With fuel and fluids: 645 kg 1423 lb
Length	2870 mm 113 in.
Width	1435 mm 56.5 in.
Height	1867 mm 73.5 in.
Tread centers	Front: 1220 mm 48 in. Rear: 1168 mm 46 in.
Ground clearance	Minimum: 267 mm 10.5 in.
Fuel capacity	28 L 7.4 U.S. gal.
Cargo box dimensions	820 x 1209 x 297 mm 32.3 x 47.6 x 11.7 in.
Cargo box capacity (weight)	227 kg 500 lb
Payload capacity	408 kg 900 lb
Towing capacity	680 kg 1500 lb
Hitch	Standard 50 mm (2 in.) rear receiver with optional 50 mm (2 in.) front receiver with recovery loops

## Features

**Features**

Color	Green/yellow, olive/black, camo
Power steering	Not available
Battery / Alternator / Power port	Battery: 12 V 340 CCA Alternator: 65 amp DC outlet: 12 V
Instrumentation	Digital display (gear position, system diagnostic light, speed, rpm, 4WD indicator, rear differential indicator, fuel level, coolant temperature, hour meter, miles, and service interval warning light)
Storage	Two cupholders, sealed underhood storage, glove box
Seating	Black vinyl bench

**Additional information**

Country of Manufacture	U.S.
Date collected	8-Jun-22

72" Diesel Zero Turn Mower	Bid Opening 1/9/2023 at 2:00 p.m.	DRAFT	
Vendor	Price	Description	
Crown Power	\$ 17,404.82	Grasshoper 725 DT; optional mulching kits \$195.18; 3 year warranty unlimited hours estimated delivery 3/10/2023	
Crown Power	\$ 17,604.11	Grasshoper 400 D-1.3L; optional mulching kits \$195.89; 3 year warranty unlimited hours estimated delivery 3/10/2023	
Crown Power	\$ 15,303.22	Grasshoper 325 D; optional mulching kits \$196.78; 3 year warranty unlimited hours estimated delivery 3/10/2023	
Crown Power	\$ 20,403.95	Grasshoper 900-1.3L D; optional mulching kits \$196.05; 3 year warranty unlimited hours estimated delivery 3/10/2023	
Quarles Supply	\$ 17,523.00	Kubota ZD1211; optional mulching kit \$358.00; 2 year warranty no estimated delivery date written on bid	
Heritage Tractor	\$ 16,250.00	John Deere Z994R; optional mulching kit \$450.47; 3 year warrance or 1500 hours asap - in stock 2023 model	



345 S. Main Ave, PO Box 9, • Bolivar, Missouri 65613  
Telephone (417)326-2489 • Fax (417) 777-3212  
www.bolivar.mo.us

## City of Bolivar

### Bid Form

Bid opening January 9<sup>th</sup>, 2023

72" Diesel Zero Turn

(a) Price of Current Model 72" Diesel Zero Turn \$ 17404.82

(b) Second bid of Heavier Construction (Better unit, if applicable) \$ \_\_\_\_\_

Optional Mulching Kit \$ 195.18

Warranty: 3 Year

Deviations or Exceptions: \_\_\_\_\_

(a) Make & Model Bid Grasshopper 725DT

(b) Make & Model Bid \_\_\_\_\_

Delivery Date: March 10<sup>th</sup>

Signed: Darren Redd

Company: Crown Power

Address: 3815 S Springfield Ave Bolivar Mo 65613

Phone #: 417-326-7641



# GRASSHOPPER LIMITED WARRANTY



**WARRANTY 3 Year Limited Commercial / 4 Year or 800 Hour Limited Residential**

**MODELS 200/300/400 Series; 600 Series; 700/900 Series**

**SERIAL NUMBERS 6200000 and higher**

## WHAT THIS WARRANTY COVERS

The selling dealer warrants, on the terms and conditions in this Limited Warranty, that it will repair, replace or adjust any product or part manufactured by The Grasshopper Company ("Grasshopper") which is a component of a Grasshopper Commercial Turf Equipment product ("turf equipment") and which is defective in material installed or workmanship performed in Grasshopper's factory.

## THE PERIOD OF COVERAGE AND CONDITIONS

This limited **Commercial Warranty** applies to Grasshopper turf equipment sold in the US or Canada for a period of three (3) years from the date of original purchase for use (ninety (90) days for rental use). Commercial warranty applies to agricultural, governmental, commercial, industrial or multiple locations usage. This warranty includes the cost of parts and labor for a period of two (2) years and the cost of parts for one additional year. **Residential warranty:** This limited warranty is limited to four (4) years or 800 hours (whichever occurs first) for residential usage. Residential usage means use of product around a single residence only. Use at more than one location is considered commercial and the commercial use warranty above would apply. This warranty includes cost of parts and labor. **Replacement parts or repairs** provided through warranty service shall be warranted for only the remainder of the original warranty period. **Warranty Exceptions:** Belts and tires are warranted for ninety (90) days against defects in materials or workmanship. Batteries are warranted for fifteen (15) months. Warranty on electric clutches includes cost of parts and labor for a period of two (2) years.

## WHAT THIS WARRANTY DOES NOT COVER

**Implements/attachments not manufactured by Grasshopper** are not covered by this warranty. The manufacturers of such items may provide separate warranties for such components.

**The engine is warranted by its manufacturer, not by Dealer.** Please refer to the engine manufacturer's warranty statement that is included in the engine manual in the owner's packet. Neither Dealer nor Grasshopper is authorized to handle warranty claims on engines. Engine warranty claims should be referred to the nearest authorized service outlet of the engine manufacturer.

## WHO GETS THIS WARRANTY

This warranty extends only to the original purchaser for use of the equipment, unless applicable law provides otherwise. The warranty may not be assigned or transferred without the prior express written consent of manufacturer.

## HOW TO GET SERVICE

To be covered by this warranty, the turf equipment, including any defective part, must be returned to an authorized Grasshopper service dealer within the warranty period. The warranty shall extend only to the cost to repair or replace (**as determined by Dealer**) the defective part, including labor. The expense of delivering the turf equipment to the dealer for warranty work and the expense of returning it to the owner after repair or replacement will be paid by the owner. Proof of purchase may be required by the dealer to substantiate any warranty claim. All warranty work must be performed by an authorized Grasshopper service dealer using Grasshopper approved replacement parts.

## LIMITATIONS OF THIS WARRANTY

**DEALER'S SOLE RESPONSIBILITY UNDER THIS LIMITED WARRANTY IS TO MAKE REPAIRS OR REPLACEMENTS IN ACCORDANCE WITH THE TERMS OF THIS LIMITED WARRANTY. DEALER MAKES NO OTHER EXPRESS WARRANTIES. ANY WARRANTY IMPLIED BY LAW ON ANY PRODUCT OR PART COVERED BY THIS LIMITED WARRANTY IS LIMITED IN DURATION TO THE LENGTH OF THIS LIMITED WARRANTY. NO PERSON, ENTITY, OTHER DEALER, OR DISTRIBUTOR HAS THE AUTHORITY TO ASSUME FOR OR CREATE FOR DEALER ANY OTHER OBLIGATION, WARRANTY, OR LIABILITY IN CONNECTION WITH GRASSHOPPER PRODUCTS. IN NO EVENT SHALL DEALER BE LIABLE FOR LOST PROFITS, SPECIAL, INCIDENTAL OR CONSEQUENTIAL DAMAGES. SOME STATES OR PROVINCES DO NOT ALLOW LIMITATIONS ON HOW LONG AN IMPLIED WARRANTY LASTS OR THE EXCLUSION OR LIMITATION OF INCIDENTAL OR CONSEQUENTIAL DAMAGES, SO THESE LIMITATIONS MAY NOT APPLY TO YOU.**

Any limitations set forth in this limited warranty do not apply to the extent they are prohibited by applicable law.

Dealer reserves the right to sell turf equipment with changes, improvements or modifications in specifications without thereby being obligated to install or make the same on turf equipment previously sold by Dealer.

## SITUATIONS IN WHICH THIS WARRANTY DOES NOT APPLY

**This warranty extends only to turf equipment that is operated under normal conditions and properly serviced and maintained.**

The warranty does **NOT** cover: (i) normal maintenance services, such as oil change, cleaning, lubrication, or adjustment; (ii) replacement of service items, such as oil, lubricants, spark plugs, belts, rubber hoses, blades, blade sharpening, or other items subject to normal service replacement; (iii) damage or defects arising out of or caused by misuse, neglect, alteration, negligence or accident; (iv) repair or replacement required because of operation or use of the turf equipment which is not in accordance with operating instructions as specified in the operator's manual or other operational instructions provided by Grasshopper; (v) repair or replacement required because of alteration or modification of the turf equipment not performed or authorized by Dealer (damage caused by foam filled or solid filled tires); (vi) repair or replacement necessitated by use of parts, accessories or supplies, including gasoline, oil or lubricants, incompatible with the turf equipment or other than as recommended in the operator's manual or other operational instructions provided by Grasshopper; (vii) repairs or replacements necessitated by installation or use of non-recommended parts or accessories that have adversely affected the operation, performance or durability of the turf equipment; or (viii) damage or defects due to or arising out of repair of turf equipment by any person or persons other than an authorized Grasshopper service dealer or the installation of parts other than genuine Grasshopper parts, Grasshopper- recommended parts or equivalent. There are no other express warranties except for engine and special emission system coverage.

**PLEASE NOTE: TO RETAIN YOUR RIGHTS UNDER THIS LIMITED WARRANTY, YOU ARE REQUIRED TO HAVE READ THE OPERATOR'S MANUAL AND TO HAVE COMPLETED, SIGNED AND RETURNED THE ATTACHED WARRANTY REGISTRATION CARD WITHIN TEN (10) DAYS OF PURCHASE OF YOUR TURF EQUIPMENT.**

## OTHER LEGAL RIGHTS

This Warranty gives you specific legal rights, and you may also have other rights which vary from state to state.

# Grasshopper QuikQuote #19027N00047



Quoted by

**Crown Power & Equipment Bolivar**

3815 South Springfield Ave

Bolivar, MO 65613

P: (417) 326-7641

**DARREN REDD**

SALES

E: [DREDD@CROWN-POWER.COM](mailto:DREDD@CROWN-POWER.COM)

P: 417-326-7641 C: 417-327-2027

Quoted for

**City of Bolivar**



**Model 725DT with 3472PF**

Quoted: Jan 4, 2023

## Power Unit & Deck

List	Bid
<b>Model 725DT</b> (532127) 898cc MaxTorque? Diesel engine; "no-gears" T6? pump-and-wheel-motor transmission; AntiVibe Power Platform?; luxury seat and shock-absorbing footrest	\$16,950.00 \$12,724.25

<b>3472PF</b> – 72" w/ PowerFold & pneumatic tires standard (532979)	\$4,895.00 \$3,674.64
---	-----------------------

List Total: **\$23,445.00**

Bid Price: **\$17,600.00**

Grand Total:  
**\$17,600.00**

## Wholegoods

	List	Bid
<b>503219+503220</b> – Counterweight Kit - 100 lb. with mount kit (Two 50-lb. weights included)	\$385.00	\$289.02
<b>533578</b> – Premier Suspension Seat	\$775.00	\$581.79
<b>533550</b> – Foldable ROPS w/ Seatbelt	\$180.00	\$135.12
<b>504571</b> – Down Discharge Mulching Package - 72"	\$260.00	\$195.18



345 S. Main Ave, PO Box 9, • Bolivar, Missouri 65613  
Telephone (417)326-2489 • Fax (417) 777-3212  
www.bolivar.mo.us

## City of Bolivar

### Bid Form

Bid opening January 9<sup>th</sup>, 2023

72" Diesel Zero Turn

(a) Price of Current Model 72" Diesel Zero Turn \$ 17604.11

(b) Second bid of Heavier Construction (Better unit, if applicable) \$ \_\_\_\_\_

Optional Mulching Kit \$ 195.89

Warranty: 3 Year

Deviations or Exceptions: \_\_\_\_\_

(a) Make & Model Bid Grasshopper 400D-1.3 L 72" Deck

(b) Make & Model Bid \_\_\_\_\_

Delivery Date: March 10<sup>th</sup>

Signed: Darren Redd

Company: Crown Power

Address: 3815 S Springfield Ave Bolivar Mo 65613

Phone #: 417-326-7641

# GRASSHOPPER LIMITED WARRANTY



**WARRANTY 3 Year Limited Commercial / 4 Year or 800 Hour Limited Residential**

**MODELS 200/300/400 Series; 600 Series; 700/900 Series**

**SERIAL NUMBERS 6200000 and higher**

## WHAT THIS WARRANTY COVERS

The selling dealer warrants, on the terms and conditions in this Limited Warranty, that it will repair, replace or adjust any product or part manufactured by The Grasshopper Company ("Grasshopper") which is a component of a Grasshopper Commercial Turf Equipment product ("turf equipment") and which is defective in material installed or workmanship performed in Grasshopper's factory.

## THE PERIOD OF COVERAGE AND CONDITIONS

This limited **Commercial Warranty** applies to Grasshopper turf equipment sold in the US or Canada for a period of three (3) years from the date of original purchase for use (ninety (90) days for rental use). Commercial warranty applies to agricultural, governmental, commercial, industrial or multiple locations usage. This warranty includes the cost of parts and labor for a period of two (2) years and the cost of parts for one additional year. **Residential warranty:** This limited warranty is limited to four (4) years or 800 hours (whichever occurs first) for residential usage. Residential usage means use of product around a single residence only. Use at more than one location is considered commercial and the commercial use warranty above would apply. This warranty includes cost of parts and labor. **Replacement parts or repairs** provided through warranty service shall be warranted for only the remainder of the original warranty period. **Warranty Exceptions:** Belts and tires are warranted for ninety (90) days against defects in materials or workmanship. Batteries are warranted for fifteen (15) months. Warranty on electric clutches includes cost of parts and labor for a period of two (2) years.

## WHAT THIS WARRANTY DOES NOT COVER

**Implements/attachments not manufactured by Grasshopper** are not covered by this warranty. The manufacturers of such items may provide separate warranties for such components.

**The engine is warranted by its manufacturer, not by Dealer.** Please refer to the engine manufacturer's warranty statement that is included in the engine manual in the owner's packet. Neither Dealer nor Grasshopper is authorized to handle warranty claims on engines. Engine warranty claims should be referred to the nearest authorized service outlet of the engine manufacturer.

## WHO GETS THIS WARRANTY

This warranty extends only to the original purchaser for use of the equipment, unless applicable law provides otherwise. The warranty may not be assigned or transferred without the prior express written consent of manufacturer.

## HOW TO GET SERVICE

To be covered by this warranty, the turf equipment, including any defective part, must be returned to an authorized Grasshopper service dealer within the warranty period. The warranty shall extend only to the cost to repair or replace (**as determined by Dealer**) the defective part, including labor. The expense of delivering the turf equipment to the dealer for warranty work and the expense of returning it to the owner after repair or replacement will be paid by the owner. Proof of purchase may be required by the dealer to substantiate any warranty claim. All warranty work must be performed by an authorized Grasshopper service dealer using Grasshopper approved replacement parts.

## LIMITATIONS OF THIS WARRANTY

**DEALER'S SOLE RESPONSIBILITY UNDER THIS LIMITED WARRANTY IS TO MAKE REPAIRS OR REPLACEMENTS IN ACCORDANCE WITH THE TERMS OF THIS LIMITED WARRANTY. DEALER MAKES NO OTHER EXPRESS WARRANTIES. ANY WARRANTY IMPLIED BY LAW ON ANY PRODUCT OR PART COVERED BY THIS LIMITED WARRANTY IS LIMITED IN DURATION TO THE LENGTH OF THIS LIMITED WARRANTY. NO PERSON, ENTITY, OTHER DEALER, OR DISTRIBUTOR HAS THE AUTHORITY TO ASSUME FOR OR CREATE FOR DEALER ANY OTHER OBLIGATION, WARRANTY, OR LIABILITY IN CONNECTION WITH GRASSHOPPER PRODUCTS. IN NO EVENT SHALL DEALER BE LIABLE FOR LOST PROFITS, SPECIAL, INCIDENTAL OR CONSEQUENTIAL DAMAGES. SOME STATES OR PROVINCES DO NOT ALLOW LIMITATIONS ON HOW LONG AN IMPLIED WARRANTY LASTS OR THE EXCLUSION OR LIMITATION OF INCIDENTAL OR CONSEQUENTIAL DAMAGES, SO THESE LIMITATIONS MAY NOT APPLY TO YOU.**

Any limitations set forth in this limited warranty do not apply to the extent they are prohibited by applicable law.

Dealer reserves the right to sell turf equipment with changes, improvements or modifications in specifications without thereby being obligated to install or make the same on turf equipment previously sold by Dealer.

## SITUATIONS IN WHICH THIS WARRANTY DOES NOT APPLY

**This warranty extends only to turf equipment that is operated under normal conditions and properly serviced and maintained.**

The warranty does **NOT** cover: (i) normal maintenance services, such as oil change, cleaning, lubrication, or adjustment; (ii) replacement of service items, such as oil, lubricants, spark plugs, belts, rubber hoses, blades, blade sharpening, or other items subject to normal service replacement; (iii) damage or defects arising out of or caused by misuse, neglect, alteration, negligence or accident; (iv) repair or replacement required because of operation or use of the turf equipment which is not in accordance with operating instructions as specified in the operator's manual or other operational instructions provided by Grasshopper; (v) repair or replacement required because of alteration or modification of the turf equipment not performed or authorized by Dealer (damage caused by foam filled or solid filled tires); (vi) repair or replacement necessitated by use of parts, accessories or supplies, including gasoline, oil or lubricants, incompatible with the turf equipment or other than as recommended in the operator's manual or other operational instructions provided by Grasshopper; (vii) repairs or replacements necessitated by installation or use of non-recommended parts or accessories that have adversely affected the operation, performance or durability of the turf equipment; or (viii) damage or defects due to or arising out of repair of turf equipment by any person or persons other than an authorized Grasshopper service dealer or the installation of parts other than genuine Grasshopper parts, Grasshopper-recommended parts or equivalent. There are no other express warranties except for engine and special emission system coverage.

**PLEASE NOTE: TO RETAIN YOUR RIGHTS UNDER THIS LIMITED WARRANTY, YOU ARE REQUIRED TO HAVE READ THE OPERATOR'S MANUAL AND TO HAVE COMPLETED, SIGNED AND RETURNED THE ATTACHED WARRANTY REGISTRATION CARD WITHIN TEN (10) DAYS OF PURCHASE OF YOUR TURF EQUIPMENT.**

## OTHER LEGAL RIGHTS

This Warranty gives you specific legal rights, and you may also have other rights which vary from state to state.

# Grasshopper QuikQuote #19027N00049



Quoted by

**Crown Power & Equipment Bolivar**

3815 South Springfield Ave

Bolivar, MO 65613

P: (417) 326-7641

**DARREN REDD**

SALES

E: [DREDD@CROWN-POWER.COM](mailto:DREDD@CROWN-POWER.COM)

P: 417-326-7641 C: 417-327-2027

Quoted for

**City of Bolivar**



**Model 400D-1.3L with 72" deck**

Quoted: Jan 4, 2023

## Power Unit & Deck

List	Bid
------	-----

**Model 400D-1.3L with 72" deck (534192)**

\$22,390.00	\$16,869.50
-------------	-------------

1.3L MaxTorque? Diesel Engine; "no-gears"

hydraulic pump-and-wheel-motor transmission;

heavy-duty extra-deep 72" cutting deck; luxury seat

and shock-absorbing footrest

List Total: **\$23,625.00**

Bid Price: **\$17,800.00**

Grand Total:

**\$17,800.00**

## Wholegoods

List	Bid
------	-----

**533580** – Premier Suspension Seat

\$810.00	\$610.29
----------	----------

**533551** – Foldable ROPS w/ Seatbelt

\$165.00	\$124.32
----------	----------

**504571** – Down Discharge Mulching Package - 72"

\$260.00	\$195.89
----------	----------



345 S. Main Ave, PO Box 9, • Bolivar, Missouri 65613  
Telephone (417)326-2489 • Fax (417) 777-3212  
www.bolivar.mo.us

## City of Bolivar

### Bid Form

Bid opening January 9<sup>th</sup>, 2023

72" Diesel Zero Turn

(a) Price of Current Model 72" Diesel Zero Turn \$ 15303.22

(b) Second bid of Heavier Construction (Better unit, if applicable) \$ \_\_\_\_\_

Optional Mulching Kit \$ 196.78

Warranty: 3 Year

Deviations or Exceptions: \_\_\_\_\_

(a) Make & Model Bid Grasshopper 325 D 72" Deck

(b) Make & Model Bid \_\_\_\_\_

Delivery Date: March 10<sup>th</sup>

Signed: Darren Redd

Company: Crown Power

Address: 3815 S Springfield Ave Bolivar Mo 65613

Phone #: 417 326 7641



## GRASSHOPPER LIMITED WARRANTY



**WARRANTY 3 Year Limited Commercial / 4 Year or 800 Hour Limited Residential**

**MODELS 200/300/400 Series; 600 Series; 700/900 Series**

**SERIAL NUMBERS 6200000 and higher**

### WHAT THIS WARRANTY COVERS

The selling dealer warrants, on the terms and conditions in this Limited Warranty, that it will repair, replace or adjust any product or part manufactured by The Grasshopper Company ("Grasshopper") which is a component of a Grasshopper Commercial Turf Equipment product ("turf equipment") and which is defective in material installed or workmanship performed in Grasshopper's factory.

### THE PERIOD OF COVERAGE AND CONDITIONS

This limited **Commercial Warranty** applies to Grasshopper turf equipment sold in the US or Canada for a period of three (3) years from the date of original purchase for use (ninety (90) days for rental use). Commercial warranty applies to agricultural, governmental, commercial, industrial or multiple locations usage. This warranty includes the cost of parts and labor for a period of two (2) years and the cost of parts for one additional year. **Residential warranty:** This limited warranty is limited to four (4) years or 800 hours (whichever occurs first) for residential usage. Residential usage means use of product around a single residence only. Use at more than one location is considered commercial and the commercial use warranty above would apply. This warranty includes cost of parts and labor. **Replacement parts or repairs** provided through warranty service shall be warranted for only the remainder of the original warranty period. **Warranty Exceptions:** Belts and tires are warranted for ninety (90) days against defects in materials or workmanship. Batteries are warranted for fifteen (15) months. Warranty on electric clutches includes cost of parts and labor for a period of two (2) years.

### WHAT THIS WARRANTY DOES NOT COVER

**Implements/attachments not manufactured by Grasshopper** are not covered by this warranty. The manufacturers of such items may provide separate warranties for such components.

**The engine is warranted by its manufacturer, not by Dealer.** Please refer to the engine manufacturer's warranty statement that is included in the engine manual in the owner's packet. Neither Dealer nor Grasshopper is authorized to handle warranty claims on engines. Engine warranty claims should be referred to the nearest authorized service outlet of the engine manufacturer.

### WHO GETS THIS WARRANTY

This warranty extends only to the original purchaser for use of the equipment, unless applicable law provides otherwise. The warranty may not be assigned or transferred without the prior express written consent of manufacturer.

### HOW TO GET SERVICE

To be covered by this warranty, the turf equipment, including any defective part, must be returned to an authorized Grasshopper service dealer within the warranty period. The warranty shall extend only to the cost to repair or replace (**as determined by Dealer**) the defective part, including labor. The expense of delivering the turf equipment to the dealer for warranty work and the expense of returning it to the owner after repair or replacement will be paid by the owner. Proof of purchase may be required by the dealer to substantiate any warranty claim. All warranty work must be performed by an authorized Grasshopper service dealer using Grasshopper approved replacement parts.

### LIMITATIONS OF THIS WARRANTY

**DEALER'S SOLE RESPONSIBILITY UNDER THIS LIMITED WARRANTY IS TO MAKE REPAIRS OR REPLACEMENTS IN ACCORDANCE WITH THE TERMS OF THIS LIMITED WARRANTY. DEALER MAKES NO OTHER EXPRESS WARRANTIES. ANY WARRANTY IMPLIED BY LAW ON ANY PRODUCT OR PART COVERED BY THIS LIMITED WARRANTY IS LIMITED IN DURATION TO THE LENGTH OF THIS LIMITED WARRANTY. NO PERSON, ENTITY, OTHER DEALER, OR DISTRIBUTOR HAS THE AUTHORITY TO ASSUME FOR OR CREATE FOR DEALER ANY OTHER OBLIGATION, WARRANTY, OR LIABILITY IN CONNECTION WITH GRASSHOPPER PRODUCTS. IN NO EVENT SHALL DEALER BE LIABLE FOR LOST PROFITS, SPECIAL, INCIDENTAL OR CONSEQUENTIAL DAMAGES. SOME STATES OR PROVINCES DO NOT ALLOW LIMITATIONS ON HOW LONG AN IMPLIED WARRANTY LASTS OR THE EXCLUSION OR LIMITATION OF INCIDENTAL OR CONSEQUENTIAL DAMAGES, SO THESE LIMITATIONS MAY NOT APPLY TO YOU.**

Any limitations set forth in this limited warranty do not apply to the extent they are prohibited by applicable law.

Dealer reserves the right to sell turf equipment with changes, improvements or modifications in specifications without thereby being obligated to install or make the same on turf equipment previously sold by Dealer.

### SITUATIONS IN WHICH THIS WARRANTY DOES NOT APPLY

**This warranty extends only to turf equipment that is operated under normal conditions and properly serviced and maintained.** The warranty does **NOT** cover: (i) normal maintenance services, such as oil change, cleaning, lubrication, or adjustment; (ii) replacement of service items, such as oil, lubricants, spark plugs, belts, rubber hoses, blades, blade sharpening, or other items subject to normal service replacement; (iii) damage or defects arising out of or caused by misuse, neglect, alteration, negligence or accident; (iv) repair or replacement required because of operation or use of the turf equipment which is not in accordance with operating instructions as specified in the operator's manual or other operational instructions provided by Grasshopper; (v) repair or replacement required because of alteration or modification of the turf equipment not performed or authorized by Dealer (damage caused by foam filled or solid filled tires); (vi) repair or replacement necessitated by use of parts, accessories or supplies, including gasoline, oil or lubricants, incompatible with the turf equipment or other than as recommended in the operator's manual or other operational instructions provided by Grasshopper; (vii) repairs or replacements necessitated by installation or use of non-recommended parts or accessories that have adversely affected the operation, performance or durability of the turf equipment; or (viii) damage or defects due to or arising out of repair of turf equipment by any person or persons other than an authorized Grasshopper service dealer or the installation of parts other than genuine Grasshopper parts, Grasshopper-recommended parts or equivalent. There are no other express warranties except for engine and special emission system coverage.

**PLEASE NOTE: TO RETAIN YOUR RIGHTS UNDER THIS LIMITED WARRANTY, YOU ARE REQUIRED TO HAVE READ THE OPERATOR'S MANUAL AND TO HAVE COMPLETED, SIGNED AND RETURNED THE ATTACHED WARRANTY REGISTRATION CARD WITHIN TEN (10) DAYS OF PURCHASE OF YOUR TURF EQUIPMENT.**

### OTHER LEGAL RIGHTS

This Warranty gives you specific legal rights, and you may also have other rights which vary from state to state.

# Grasshopper QuikQuote #19027N00048



Quoted by

**Crown Power & Equipment Bolivar**

3815 South Springfield Ave

Bolivar, MO 65613

P: (417) 326-7641

**DARREN REDD**

SALES

E: [DREDD@CROWN-POWER.COM](mailto:DREDD@CROWN-POWER.COM)

P: 417-326-7641 C: 417-327-2027

Quoted for

**City of Bolivar**



**Model 325D with 72" deck**

Quoted: Jan 4, 2023

## Power Unit & Deck

### Model 325D with 72" deck (534162)

898cc MaxTorque? Diesel Engine; "no-gears"  
hydraulic pump-and-wheel-motor transmission;  
heavy-duty extra-deep 72" cutting deck; luxury seat  
and shock-absorbing footrest

List

Bid

\$19,245.00 \$14,565.31

List Total: **\$20,480.00**

Bid Price: **\$15,500.00**

Grand Total:

**\$15,500.00**

## Wholegoods

List

Bid

**533580** – Premier Suspension Seat

\$810.00 \$613.04

**533551** – Foldable ROPS w/ Seatbelt

\$165.00 \$124.88

**504571** – Down Discharge Mulching Package - 72"

\$260.00 \$196.78



345 S. Main Ave, PO Box 9, • Bolivar, Missouri 65613  
Telephone (417)326-2489 • Fax (417) 777-3212  
www.bolivar.mo.us

## City of Bolivar

### Bid Form

Bid opening January 9<sup>th</sup>, 2023

72" Diesel Zero Turn

(a) Price of Current Model 72" Diesel Zero Turn \$ 20403.95

(b) Second bid of Heavier Construction (Better unit, if applicable) \$ \_\_\_\_\_

Optional Mulching Kit \$ 196.05

Warranty: 3 Year

Deviations or Exceptions: \_\_\_\_\_

(a) Make & Model Bid Grasshopper 900D-1.3L 72" Deck

(b) Make & Model Bid \_\_\_\_\_

Delivery Date: March 10<sup>th</sup>

Signed: Darren Redd

Company: Crown Power

Address: 3815 S Springfield Ave Bolivar Mo 65613

Phone #: 417-326-7641

# GRASSHOPPER LIMITED WARRANTY



**WARRANTY 3 Year Limited Commercial / 4 Year or 800 Hour Limited Residential**

**MODELS 200/300/400 Series; 600 Series; 700/900 Series**

**SERIAL NUMBERS 6200000 and higher**

## WHAT THIS WARRANTY COVERS

The selling dealer warrants, on the terms and conditions in this Limited Warranty, that it will repair, replace or adjust any product or part manufactured by The Grasshopper Company ("Grasshopper") which is a component of a Grasshopper Commercial Turf Equipment product ("turf equipment") and which is defective in material installed or workmanship performed in Grasshopper's factory.

## THE PERIOD OF COVERAGE AND CONDITIONS

This limited **Commercial Warranty** applies to Grasshopper turf equipment sold in the US or Canada for a period of three (3) years from the date of original purchase for use (ninety (90) days for rental use). Commercial warranty applies to agricultural, governmental, commercial, industrial or multiple locations usage. This warranty includes the cost of parts and labor for a period of two (2) years and the cost of parts for one additional year. **Residential warranty:** This limited warranty is limited to four (4) years or 800 hours (whichever occurs first) for residential usage. Residential usage means use of product around a single residence only. Use at more than one location is considered commercial and the commercial use warranty above would apply. This warranty includes cost of parts and labor. **Replacement parts or repairs** provided through warranty service shall be warranted for only the remainder of the original warranty period. **Warranty Exceptions:** Belts and tires are warranted for ninety (90) days against defects in materials or workmanship. Batteries are warranted for fifteen (15) months. Warranty on electric clutches includes cost of parts and labor for a period of two (2) years.

## WHAT THIS WARRANTY DOES NOT COVER

**Implements/attachments not manufactured by Grasshopper** are not covered by this warranty. The manufacturers of such items may provide separate warranties for such components.

**The engine is warranted by its manufacturer, not by Dealer.** Please refer to the engine manufacturer's warranty statement that is included in the engine manual in the owner's packet. Neither Dealer nor Grasshopper is authorized to handle warranty claims on engines. Engine warranty claims should be referred to the nearest authorized service outlet of the engine manufacturer.

## WHO GETS THIS WARRANTY

This warranty extends only to the original purchaser for use of the equipment, unless applicable law provides otherwise. The warranty may not be assigned or transferred without the prior express written consent of manufacturer.

## HOW TO GET SERVICE

To be covered by this warranty, the turf equipment, including any defective part, must be returned to an authorized Grasshopper service dealer within the warranty period. The warranty shall extend only to the cost to repair or replace (**as determined by Dealer**) the defective part, including labor. The expense of delivering the turf equipment to the dealer for warranty work and the expense of returning it to the owner after repair or replacement will be paid by the owner. Proof of purchase may be required by the dealer to substantiate any warranty claim. All warranty work must be performed by an authorized Grasshopper service dealer using Grasshopper approved replacement parts.

## LIMITATIONS OF THIS WARRANTY

**DEALER'S SOLE RESPONSIBILITY UNDER THIS LIMITED WARRANTY IS TO MAKE REPAIRS OR REPLACEMENTS IN ACCORDANCE WITH THE TERMS OF THIS LIMITED WARRANTY. DEALER MAKES NO OTHER EXPRESS WARRANTIES. ANY WARRANTY IMPLIED BY LAW ON ANY PRODUCT OR PART COVERED BY THIS LIMITED WARRANTY IS LIMITED IN DURATION TO THE LENGTH OF THIS LIMITED WARRANTY. NO PERSON, ENTITY, OTHER DEALER, OR DISTRIBUTOR HAS THE AUTHORITY TO ASSUME FOR OR CREATE FOR DEALER ANY OTHER OBLIGATION, WARRANTY, OR LIABILITY IN CONNECTION WITH GRASSHOPPER PRODUCTS. IN NO EVENT SHALL DEALER BE LIABLE FOR LOST PROFITS, SPECIAL, INCIDENTAL OR CONSEQUENTIAL DAMAGES. SOME STATES OR PROVINCES DO NOT ALLOW LIMITATIONS ON HOW LONG AN IMPLIED WARRANTY LASTS OR THE EXCLUSION OR LIMITATION OF INCIDENTAL OR CONSEQUENTIAL DAMAGES, SO THESE LIMITATIONS MAY NOT APPLY TO YOU.**

Any limitations set forth in this limited warranty do not apply to the extent they are prohibited by applicable law.

Dealer reserves the right to sell turf equipment with changes, improvements or modifications in specifications without thereby being obligated to install or make the same on turf equipment previously sold by Dealer.

## SITUATIONS IN WHICH THIS WARRANTY DOES NOT APPLY

**This warranty extends only to turf equipment that is operated under normal conditions and properly serviced and maintained.** The warranty does **NOT** cover: (i) normal maintenance services, such as oil change, cleaning, lubrication, or adjustment; (ii) replacement of service items, such as oil, lubricants, spark plugs, belts, rubber hoses, blades, blade sharpening, or other items subject to normal service replacement; (iii) damage or defects arising out of or caused by misuse, neglect, alteration, negligence or accident; (iv) repair or replacement required because of operation or use of the turf equipment which is not in accordance with operating instructions as specified in the operator's manual or other operational instructions provided by Grasshopper; (v) repair or replacement required because of alteration or modification of the turf equipment not performed or authorized by Dealer (damage caused by foam filled or solid filled tires); (vi) repair or replacement necessitated by use of parts, accessories or supplies, including gasoline, oil or lubricants, incompatible with the turf equipment or other than as recommended in the operator's manual or other operational instructions provided by Grasshopper; (vii) repairs or replacements necessitated by installation or use of non-recommended parts or accessories that have adversely affected the operation, performance or durability of the turf equipment; or (viii) damage or defects due to or arising out of repair of turf equipment by any person or persons other than an authorized Grasshopper service dealer or the installation of parts other than genuine Grasshopper parts, Grasshopper-recommended parts or equivalent. There are no other express warranties except for engine and special emission system coverage.

**PLEASE NOTE: TO RETAIN YOUR RIGHTS UNDER THIS LIMITED WARRANTY, YOU ARE REQUIRED TO HAVE READ THE OPERATOR'S MANUAL AND TO HAVE COMPLETED, SIGNED AND RETURNED THE ATTACHED WARRANTY REGISTRATION CARD WITHIN TEN (10) DAYS OF PURCHASE OF YOUR TURF EQUIPMENT.**

## OTHER LEGAL RIGHTS

This Warranty gives you specific legal rights, and you may also have other rights which vary from state to state.

# Grasshopper QuikQuote #19027N00050



Quoted by

**Crown Power & Equipment Bolivar**

3815 South Springfield Ave

Bolivar, MO 65613

P: (417) 326-7641

**DARREN REDD**

SALES

E: [DREDD@CROWN-POWER.COM](mailto:DREDD@CROWN-POWER.COM)

P: 417-326-7641 C: 417-327-2027

Quoted for

**City of Bolivar**



**Model 900D-1.3L with 3472PF**

Quoted: Jan 4, 2023

## Power Unit & Deck

### Model 900D-1.3L (532165)

1.3L MaxTorque? Diesel engine; "no-gears" G3 pump-and-wheel-motor transmission; integrated multi-point suspension; luxury seat and shock-absorbing footrest

List

Bid

\$20,970.00 \$15,811.93

**3472PF** – 72" w/ PowerFold & pneumatic tires standard (532979)

\$4,895.00 \$3,690.96

List Total: **\$27,320.00**

Bid Price: **\$20,600.00**

Grand Total:  
**\$20,600.00**

## Wholegoods

List

Bid

**503218+503220** – Counterweight Kit - 50 lb. with mount kit (One 50-lb. weight included)

\$240.00 \$180.97

**533578** – Premier Suspension Seat

\$775.00 \$584.37

**533550** – Foldable ROPS w/ Seatbelt

\$180.00 \$135.72

**504571** – Down Discharge Mulching Package - 72"

\$260.00 \$196.05



345 S. Main Ave, PO Box 9, • Bolivar, Missouri 65613  
Telephone (417)326-2489 • Fax (417) 777-3212  
www.bolivar.mo.us

## City of Bolivar

### Bid Form

Bid opening January 9<sup>th</sup>, 2023

72" Diesel Zero Turn

(a) Price of Current Model 72" Diesel Zero Turn \$ 17,523.<sup>00</sup>

(b) Second bid of Heavier Construction (Better unit, if applicable) \$ \_\_\_\_\_

Optional Mulching Kit \$ 358

Warranty: 2 years

Deviations or Exceptions: \_\_\_\_\_

(a) Make & Model Bid ZD1211 72"

(b) Make & Model Bid \_\_\_\_\_

Delivery Date: \_\_\_\_\_

Signed: [Signature]

Company: Quarles Supply

Address: 3251 S. Springfield Ave

Phone #: 417-777-2391





QUARLES SUPPLY CO., INC.

Quote Page 1 of  
Quote Number: 458807  
Effective Date: 01/04/2023  
Valid Through: 01/31/2023

## Ship To

City of Bolivar  
Paula Henderson  
345 S. Main Ave, PO box 9  
Bolivar, MO 65613  
Work: (417) 326-2489

## Kubota Dealer

QUARLES SUPPLY CO., INC. Eli Garner  
3251 S. SPRINGFIELD AVE. Phone: (417) 777-2391  
BOLIVAR, MO 65613 Email:  
egarner@quarlessupply.com

## Bill To

City of Bolivar  
Paula Henderson  
345 S. Main Ave, PO box 9  
Bolivar, MO 65613  
Work: (417) 326-2489

## ZD1211L-3-72 - 24.8HP 72" COMMERCIAL ZTR MOWER



Description	Manufacturer	Model #	Qty	MSRP	Price Each	Total
ZD1211L-3-72 - 24.8HP 72" COMMERCIAL ZTR MOWER	Kubota	ZD1211L-3-72	1	\$20,999.00	\$17,523.00	\$17,523.00

## zd3167 - 72" mulch kit

Description	Manufacturer	Model #	Qty	MSRP	Price Each	Total
72" mulch kit	KUBOTA PARTS	zd3167	1	\$358.00	\$358.00	\$358.00

## Cash Details

Equipment Total	\$17,881.00
Additional Charges	\$0.00
<b>Cash Sale Price</b>	<b>\$17,881.00</b>

### Kubota Disclaimer

Sales quote can only be provided by a participating Kubota dealer. Only Kubota and Kubota performance-matched Allied equipment are eligible. Inclusion of Ineligible equipment may result in a higher blended APR. Stand Alone Kubota or Allied implements and attachments/accessories are subject to stand alone programs. Financing is available through Kubota Credit Corporation, U.S.A.; subject to credit approval. Program eligibility requirements are subject to change without notice and may be withdrawn without notice. Some exceptions apply. See dealer or go to [KubotaUSA.com](http://KubotaUSA.com) for more information.



## ZD1200 Series

## ZD1211L-3-72

\* \* \* EQUIPMENT IN STANDARD MACHINE \* \* \*

### DIESEL ENGINE

3 Cylinder, Kubota Model # D1105  
24.8 Gross HP @ 3000 rpm  
68.5 cu. in. Displacement  
12v 430 Amp Hr. Battery  
14 Amps Charging Output

### TRANSMISSION

Hydrostatic Drive  
(2) HST w/Gear Reduction  
Brake - Wet Multi Disks  
Forward Speeds 0 - 10.6 mph  
Reverse Speeds 0 - 5.3 mph

### STEERING / MOTION CONTROL

(2) Hand Levers, Adjustable  
Hydraulically Damped, Adjustable

### POWER TAKE OFF

Hydraulic Independent PTO  
Shaft Drive Mower Deck  
Wet Disk Clutch

### FLUID CAPACITY

Fuel Tank 13.1 gal  
Engine Coolant w/ Recovery tank 3.96 qts  
Crankcase w/ Filter 4.1 qts  
Transmission Case and Axle Gear 12.8 qts

### SAFETY EQUIPMENT

Electric Key Shut Off  
Control Lever Safety Switch  
Parking Brake Safety Switch  
Foldable ROPS  
Seat Safty Switch

### DIMENSIONS

Height 78.7"  
Length 93.7"  
Width Overall 85.8"  
Wheelbase 61.4"

### OPERATING FEATURES

Zero Turn Radius  
Adj. Front Axle: Rigid/Oscillating  
Dual Element Air Filter  
Deluxe Suspension Seat w/ Kubota Exclusive Seat Design  
Hands-free Hydraulic Deck Lift  
Hands-free Parking Brake  
Cup Holder

### SIDE DISCHARGE MOWER

60" and 72" Kubota PRO Deck w/ACS  
8 Gauge, 6" Deep Deck  
1-5" Cut Height, Adjustable  
1/4" Increments  
Flexible Discharge Cover  
3 Blades

+ Manufacturer Estimate



**JOHN DEERE**

*Heritage*  
**TRACTOR**

Quote Id: 27991090

---

Prepared For:  
**CITY OF BOLIVAR**

*Heritage*  
**TRACTOR**

Prepared By: **Seth Rock**

HERITAGE TRACTOR, INC.  
208 Route A  
Lockwood, MO 65682

Tel: 417-232-4578  
Fax: 417-232-4116  
Email: srock@heritagetractor.com

Date: 29 December 2022

Offer Expires: 30 December 2022

---

*Confidential*



---

### Quote Summary

**Prepared For:**

CITY OF BOLIVAR  
345 S MAIN AVE  
BOLIVAR, MO 65613  
astanek@bolivar.mo.us

**Prepared By:**

Seth Rock  
HERITAGE TRACTOR, INC.  
208 Route A  
Lockwood, MO 65682  
Phone: 417-232-4578  
srock@heritagetractor.com

**Quote Id:** 27991090**Created On:** 29 December 2022**Last Modified On:** 04 January 2023**Expiration Date:** 30 December 2022

---

Equipment Summary	Suggested List	Selling Price	Qty	Extended
JOHN DEERE Z994R Diesel Commercial ZTrak	\$ 23,105.00	\$ 16,250.00 X	1 =	\$ 16,250.00

---

<b>Equipment Total</b>	<b>\$ 16,250.00</b>
------------------------	---------------------

---

**Quote Summary**

Equipment Total	\$ 16,250.00
SubTotal	\$ 16,250.00
Est. Service Agreement Tax	\$ 0.00
Total	\$ 16,250.00
Down Payment	(0.00)
Rental Applied	(0.00)
<b>Balance Due</b>	<b>\$ 16,250.00</b>

Salesperson : X \_\_\_\_\_

Accepted By : X \_\_\_\_\_

---

*Confidential*

December 27, 2022

Bolivar, MO 65613

Sealed bids will be received until 2:00 p.m. on January 9th, 2023, and then publicly opened and read at 345 S. Main, Bolivar City Hall, Bolivar, Missouri, for a bid for a 72" Diesel Zero Turn Mower.

Proposals should be sealed, marked "72" Diesel Zero Turn Mower" and mailed to Bolivar City Hall, Attn: City Clerk, PO Box 9, Bolivar, MO 65613 or delivered to 345 S. Main, Bolivar, MO.

Bid Specifications may be obtained online at [www.bolivar.mo.us](http://www.bolivar.mo.us) or at City Hall, 345 S. Main between the hours of 9:00 a.m. & 4:00 p.m. Monday thru Friday.

---

Paula Henderson  
City Clerk



345 S. Main Ave, PO Box 9, • Bolivar, Missouri 65613  
Telephone (417)326-2489 • Fax (417) 777-3212  
www.bolivar.mo.us

## **72" Diesel Zero Turn Specifications**

These specifications are drafted around a current production greens mower. It is the intent of the City of Bolivar to acquire a unit of this quality or better. Deviations should be notated when submitting a bid.

**\*\*Bids must be submitted by Monday, January 9<sup>th</sup>, 2023 at 2:00 p.m.** at which time they will be publicly opened.\*\*

Please **DELIVER** bid to:

City of Bolivar

345 S. Main

Bolivar, MO 65613

Please **MAIL** bid to:

City of Bolivar

PO Box 9

Bolivar, MO 65613

**\*\*\* Envelope should clearly be notated "72" Diesel Zero Turn Bid" \*\*\***

### **General**

These specifications describe a current production model. Bidders must submit their bid Meeting or exceeding these specifications.

### **Engine**

24HP – Diesel

Liquid Cooled

**NO** DPF or equivalent of

### **Operator Station**

ROPS; Folding – Standard

Deluxe Seat



### **Cutting Unit**

Total width of cut: 72"

7 Gauge Deck

\*\*\*Bid Optional Mulching Kit\*\*\*

### **Warranty**

Dealer shall indicate on the bid form the period of the warranty on the entire mower in addition to the engine warranty.

### **Manual**

- (2) Complete paper sets including parts, operating, and service manuals
  - One paper copy may be replaced with digital copy (e-mailed/disk)

**\*\* Bid form following page \*\***



345 S. Main Ave, PO Box 9, • Bolivar, Missouri 65613  
Telephone (417)326-2489 • Fax (417) 777-3212  
www.bolivar.mo.us

## City of Bolivar

### Bid Form

Bid opening January 9<sup>th</sup>, 2023

72" Diesel Zero Turn

(a) Price of Current Model 72" Diesel Zero Turn \$ 16,250

(b) Second bid of Heavier Construction (Better unit, if applicable) \$ \_\_\_\_\_

Optional Mulching Kit \$ 450.47

Warranty: 36 months or 1500 HRS

Deviations or Exceptions: \_\_\_\_\_

(a) Make & Model Bid \_\_\_\_\_

(b) Make & Model Bid \_\_\_\_\_

Delivery Date: ASAP - In stock 2023 model

Signed: SAH RK

Company: Heritage Tractor

Address: 208 Route A Lockwood, MO 65682

Phone #: 417-262-3457

**JOHN DEERE**

# Selling Equipment

*Heritage*  
**TRACTOR**

Quote Id: 27991090

Customer: CITY OF BOLIVAR

## JOHN DEERE Z994R Diesel Commercial ZTrak

Hours:

Stock Number:

**Suggested List**

\$ 23,105.00

**Selling Price**

\$ 16,250.00

**Extended**

Code	Description	Qty	Unit	Extended
2545TC	Z994R Diesel Commercial ZTrak	1	\$ 21,839.00	\$ 21,839.00

**Standard Options - Per Unit**

001A	United States and Canada	1	\$ 0.00	\$ 0.00
1037	24x12x12 Pneumatic Turf Tire for 72" Decks	1	\$ 0.00	\$ 0.00
1506	72 In. 7 IRON PRO™ Side Discharge Mower Deck	1	\$ 750.00	\$ 750.00
2093	Fully Adjustable Suspension Seat with Armrests (24" High Back)	1	\$ 0.00	\$ 0.00
<b>Standard Options Total</b>				<b>\$ 750.00</b>

**Value Added Services Total****\$ 0.00****Other Charges**

Freight	1	\$ 281.00	\$ 281.00
EnviroCrate	1	\$ 65.00	\$ 65.00
Setup	1	\$ 170.00	\$ 170.00
<b>Other Charges Total</b>			<b>\$ 516.00</b>

**Suggested Price****\$ 23,105.00****Customer Discounts****Customer Discounts Total****\$ -6,855.00****\$ -6,855.00****Total Selling Price****\$ 16,250.00**

MODEL	Z994R (Model year 2023)	Select a Model to Compare
-------	-------------------------	---------------------------

## Key Specs

Engine Manufacturer/model	3TNV80F
Engine power	Gross at 3,200 rpm, PS: 24.7 hp 18.4 kW
Fuel tank capacity	11.5 U.S. gal. 43.5 L
Mower deck size	Side discharge, 54 in. 137 cm Side discharge, rear discharge, Mulch On Demand™: 60 in. 152 cm Side discharge, rear discharge: 72 in. 183 cm
Blade tip speed	Side discharge: approximately 16,000 fpm Rear discharge: approximately 15,000 fpm
Transmission	Dual hydrostatic wheel drive TuffTorq™ heavy-duty ground drive with cross porting for improved cooling
Speed range	0-11.4 mph 0-18.3 km/h
Drive wheels	24x12.00-12 4-ply turf, optional 24x12-12 Michelin® Tweel® turf tires
Caster wheels	13x5.0-6 flat free
Warranty	36 months or 1500 hours, whichever comes first, no hour limitation for the first 24 months.

## Engine

**Engine**

Manufacturer/Model	3TNV80F
Power	Gross at 3,200 rpm, PS: 24.7 hp 18.4 kW
Displacement	77.3 cu in. 1.27 L
Cylinders	Three
Crankcase capacity	3.6 U.S. qt 3.4 L
Oil filter	Full flow, replaceable, spin-on type
Lubrication	Full pressure
Cooling	Liquid
Air cleaner	Heavy-duty canister, dry type with safety element and air- restriction indicator
Pre-cleaner	Yes

**Fuel system**

Fuel type	Diesel or Biodiesel (up to B20)
Fuel tank capacity	11.5 U.S. gal. 43.5 L
Fuel tank switch/shut-off valve	Yes

**Electrical system**

Charge system	75 amp
Battery voltage	12 V
Cold cranking amp	At 18 degrees C, 600 amp
Hour meter	Digital multi-function display  Standard

**Electrical system**

Operator presence starting system

**Drivetrain**

Transmission

Dual hydrostatic wheel drive  
TuffTorq heavy-duty ground drive with cross porting for improved cooling

Travel speed



## Drivetrain

Speed range	0-11.4 mph 0-18.3 km/h
Forward	0-11.4 mph 0-18.3 km/h
Reverse	0-4.5 mph 0-7.2 km/h
Speed and direction control	Zero turn
Hydraulic capacity	5.9 U.S. gal. 5.6 L
Hydraulic oil cooler	Fins and fan
Filter	Internal, replaceable

## Buyer's note

Warranty	36 months or 1500 hours, whichever comes first, no hour limitation for the first 24 months.
----------	---

## Tires

Drive wheels	24x12.00-12 4-ply turf, optional 24x12N12 Michelin Tweel turf tires
Rear tires	24x12.00-12 4-ply turf, optional 24x12N12 Michelin Tweel turf tires
Load rating	4PR

## Brakes

Dynamic braking	Twin motion control levers
Park brake	Internal wet disk integrated in the transmission
Park brake actuation	Foot brake engagement also brings steering levers to the neutral position

**PTO**

Type Electric clutch

Drive V-belt

**Mower decks**

Size Side discharge, 54 in.  
137 cm  
Side discharge, rear discharge,  
Mulch On Demand: 60 in.  
152 cm  
Side discharge, rear discharge:  
72 in.  
183 cm

Deck construction 7-Iron™ PRO side discharge:  
One piece stamped steel  
Fastback™ PRO rear  
discharge: 7-gauge fabricated  
steel

Deck thickness 7 gauge  
0.180 in.  
4.6 mm

Discharge Side-discharge, rear-  
discharge, Mulch On Demand

Height-of-cut range 1-5.5 in.  
2.54-14 cm

Increments 0.25 in.  
0.64 cm

Cutting width 54, 60, 72 in.  
137, 152, 183 cm

**Blades**

Length Varies by deck size

Thickness 0.25 in.  
0.64 cm  
Varies by deck size and  
configuration

Blade tip speed Side discharge: approximately  
16,000 fpm

**Blades**

	Rear discharge: approximately 15,000 fpm
Number	Three

**Wheels**

Caster wheel type	Flat free
Caster wheels	13x5.0-6
Front anti-scalp rollers	LH, RH, Center
Rear anti-scalp rollers	Standard

**Dimensions**

Length	88.6 in. 225 cm
	With 54-in. (137-cm) side-discharge mower deck: 68 in. 172.7 cm
	With 60-in. (152-cm) side-discharge or Mulch On Demand side-discharge mower deck: 74 in. 188 cm
Width	With 72-in. (183-cm) side-discharge mower deck: 86 in. 218.4 cm
	With 60-in. (152-cm) rear discharge mower deck: 63.5 in. 161.3 cm
	With 72-in. (183-cm) rear discharge mower deck: 75.8 in. 192.5 cm
Height	With ROPS up 73 in. 185 cm
	With ROPS down 47 in. 119 cm
Weight	54-in. (137-cm) side discharge 1,660 lb 753 kg
	60-in. (152-cm) side discharge 1,700 lb 771 kg

**Dimensions**

60-in. (152-cm) Mulch On  
Demand 1,720 lb  
780 kg  
72-in. (183-cm) side discharge  
1,760 lb  
798 kg

**Operation**

Rollover protective structure  
(ROPS)

Yes

Slope operating limit

20 degrees (10 degrees with  
material collection system)

**Additional information**

Date collected

1-Oct-2022

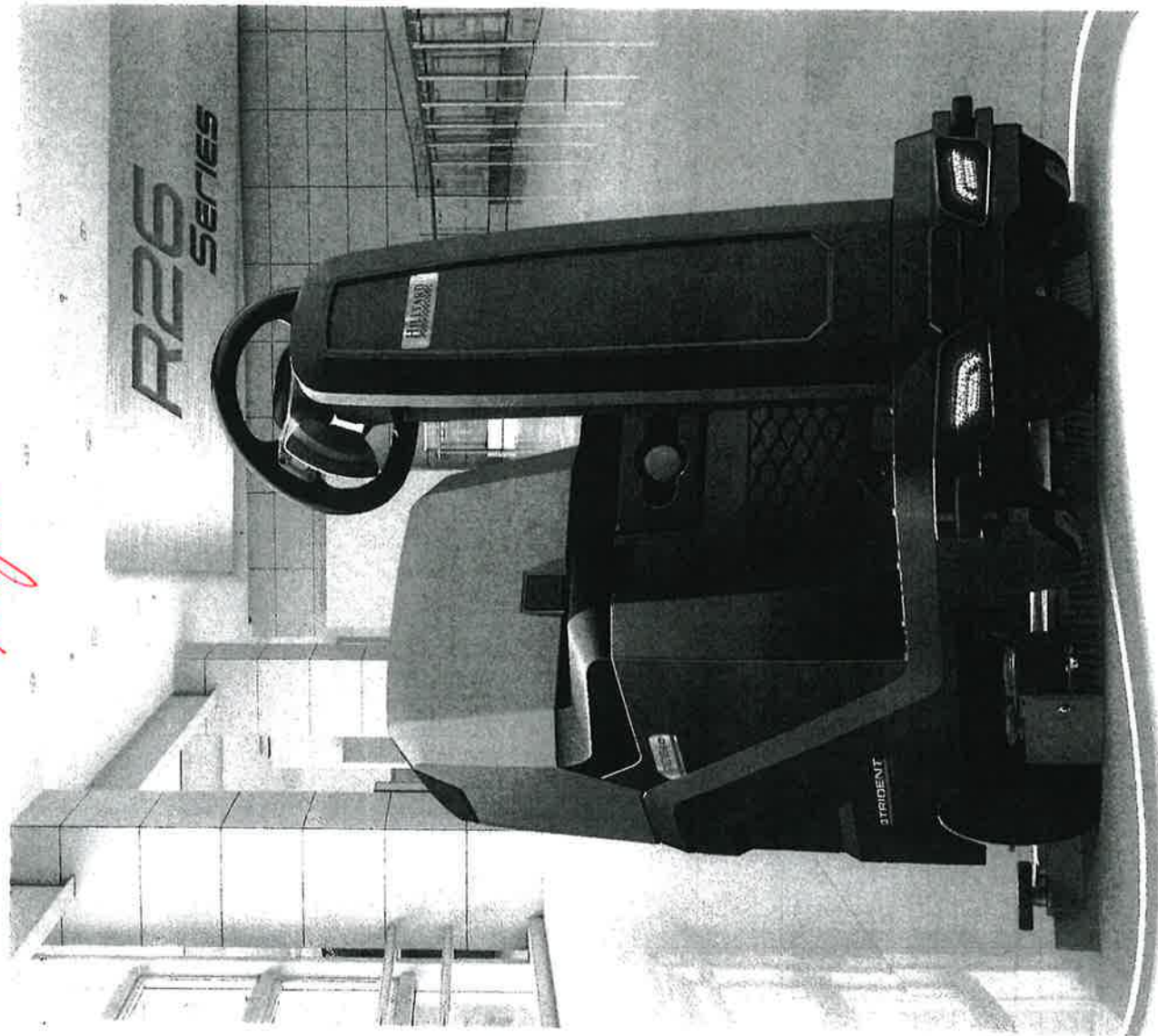
Floor Scrubber Comparisons			
----------------------------	--	--	--

HILLYARD R26SC Pro Rider Springfield, Mo	KSS Enterprises - Trident R26 Pro 26" Rider Kalamazoo, MI	WYNN Innovations PAS26R Crossover Rider Greenwood, CA	Technology International R22 Rider Lake Mary, Florida
--	--	---	---

Unit Cost \$11,920.28	Unit Cost \$13,376.33	Unit Cost \$10,250.00	Unit Cost \$7,300
Warranty 10 yr - Tanks/Plastics 3 yr - Parts 2 yr - Labor 1 yr - Travel	Warranty 10 yr - Tanks/Plastics 3 yr - Parts 2 yr - Labor 1 yr - Travel	Warranty 5 yr - Tanks/Plastics 2 yr - Brush/Motor 1 yr- parts/labor	Did not meet our specs. This unit is a smaller unit.
Brush Pressure 88-132 psi	Brush Pressure 88-132 psi	Brush Pressure 0-44 psi	
Versatile Machine: Concrete Rubber flooring Wood Flooring	Versatile Machine: Concrete Rubber Flooring Wood Flooring	Versatile Machine: Concrete Rubber Flooring Wood Flooring	
No Shipping - Will Deliver and onsite Demonstration	Shipping - TBD - Est. \$500.00	Shipping - Included in price	
Total \$11,920.28	\$13,376.33	\$10,250.00	

Buff and Polish Pads \$245.04	Buff and Polish Pads Did not give us pricing	Buff and Polish Pads Did not give us pricing	
----------------------------------	---	---	--

*Hillyard*

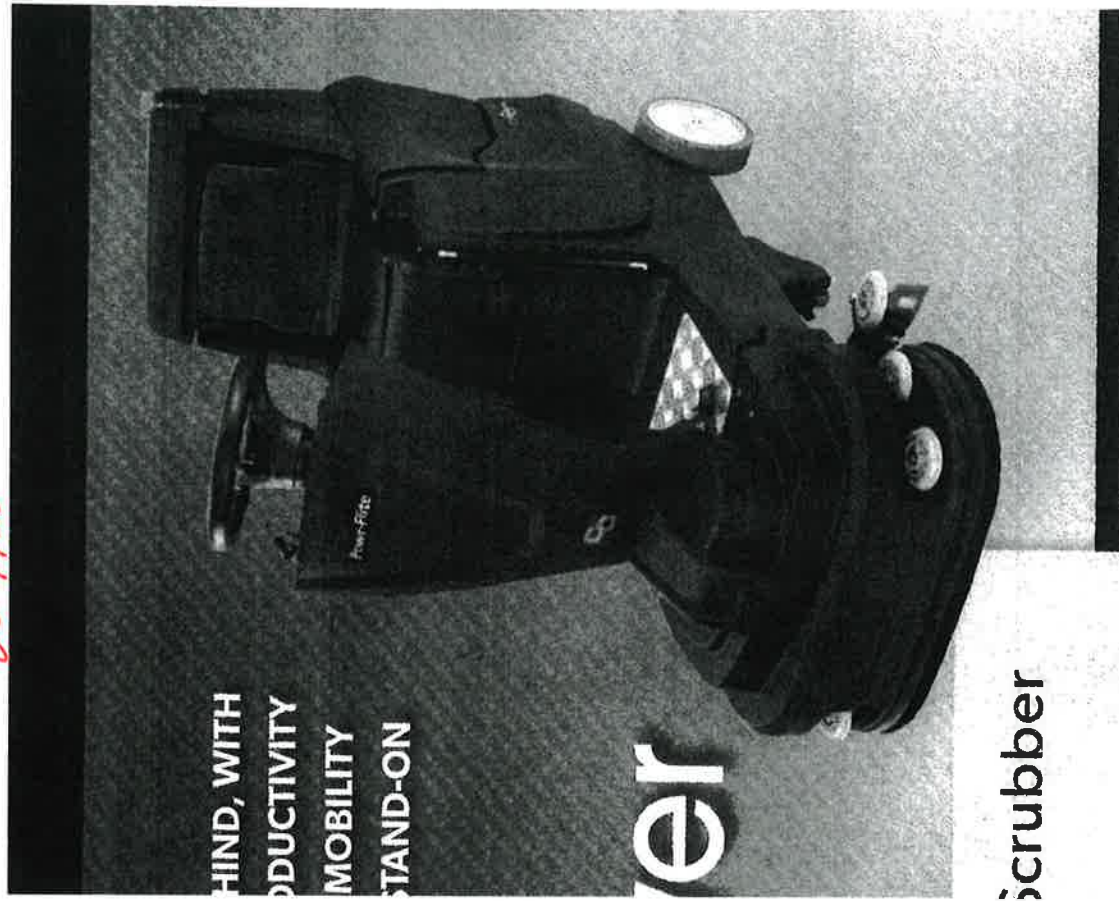


**TRIDENT®**

Better Built. Better Equipment.

**HILLYARD**  
The Cleaning Resource®

*Why*



er  
HIND, WITH  
ODUCTIVITY  
MOBILITY  
STAND-ON

scrubber