

RESULTS FROM THE COVID-19 SURVEY

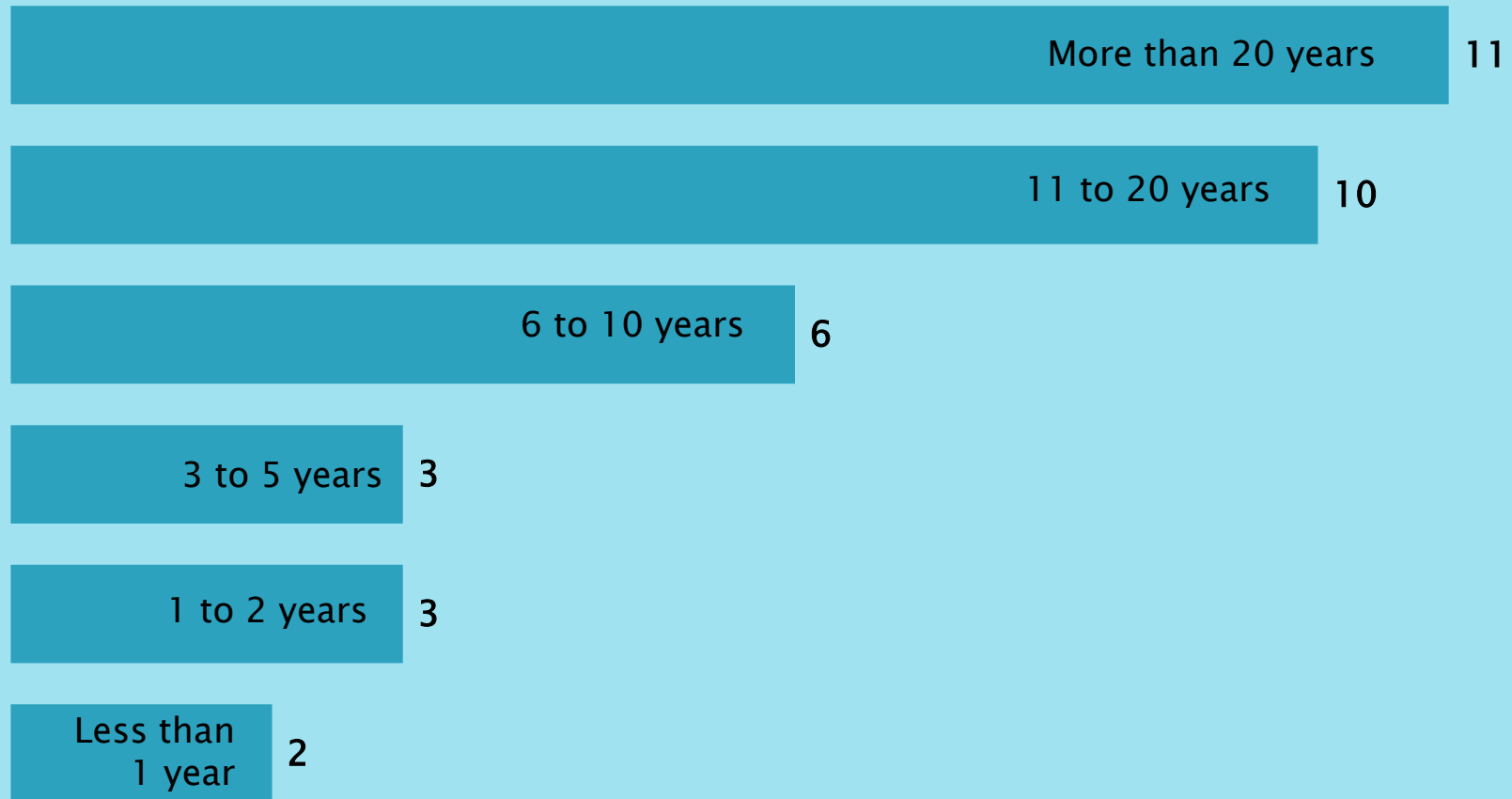
The Economic Development Alliance -
Bolivar and Polk County, in Partnership
with the Bolivar Area Chamber of
Commerce, Want To Know ...

Results, as of July 15, 2020
(Powered by SurveyMonkey)

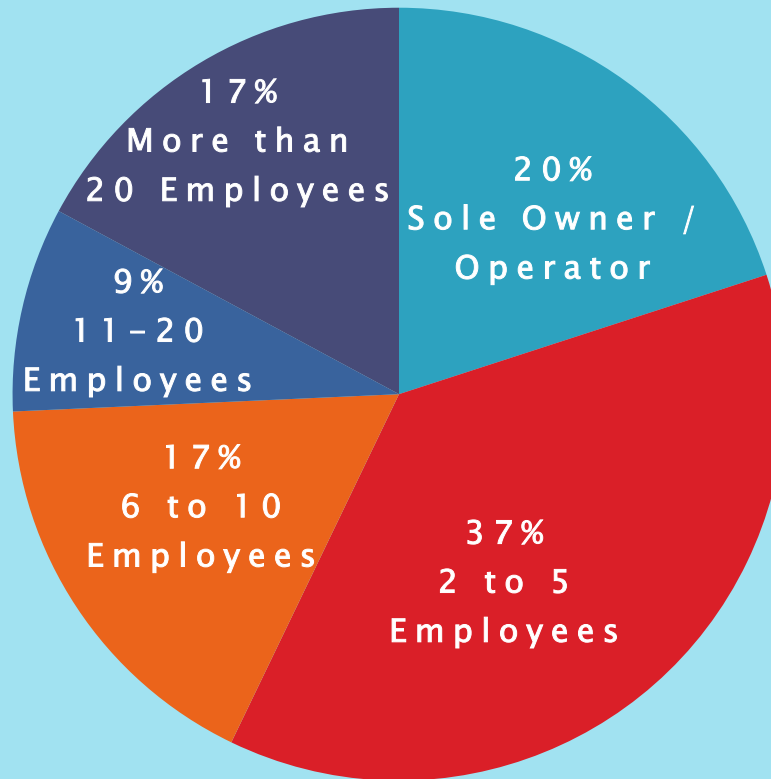
What types of businesses answered our survey?

- » Length of Time in Business;
Number of Employees; Type of Service Provided

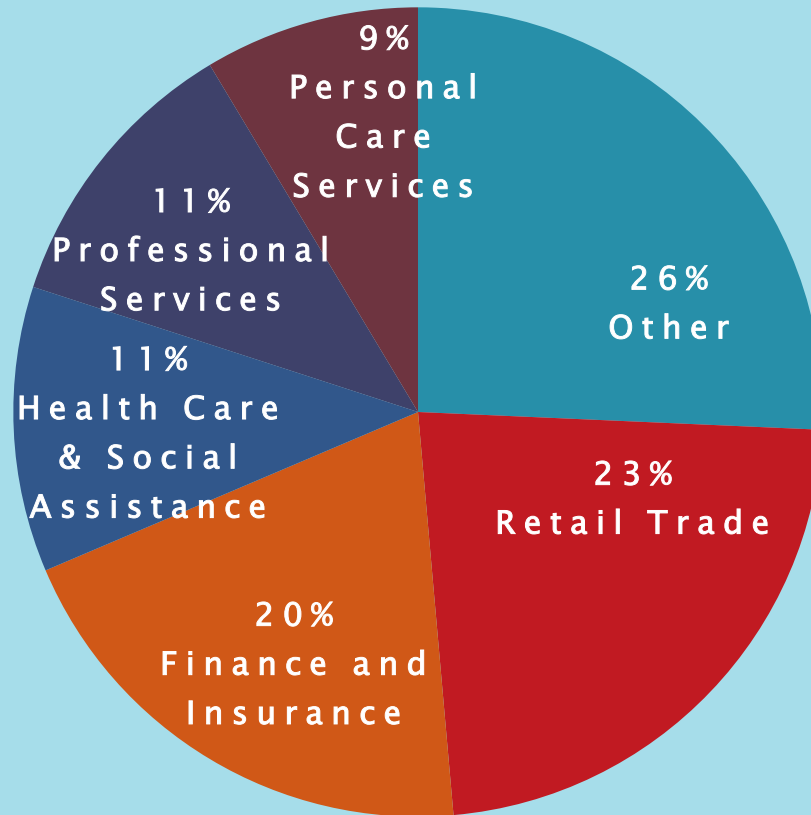
How long has your business been in operation?



How many people does your business employ?



What type of service or product does your business provide?



The Other Category Represents Construction, Utilities, Manufacturing, Telecommunications, Food Service, Yard care, and a Call Center.

BUSINESS OUTLOOK

»» Prior to COVID-19

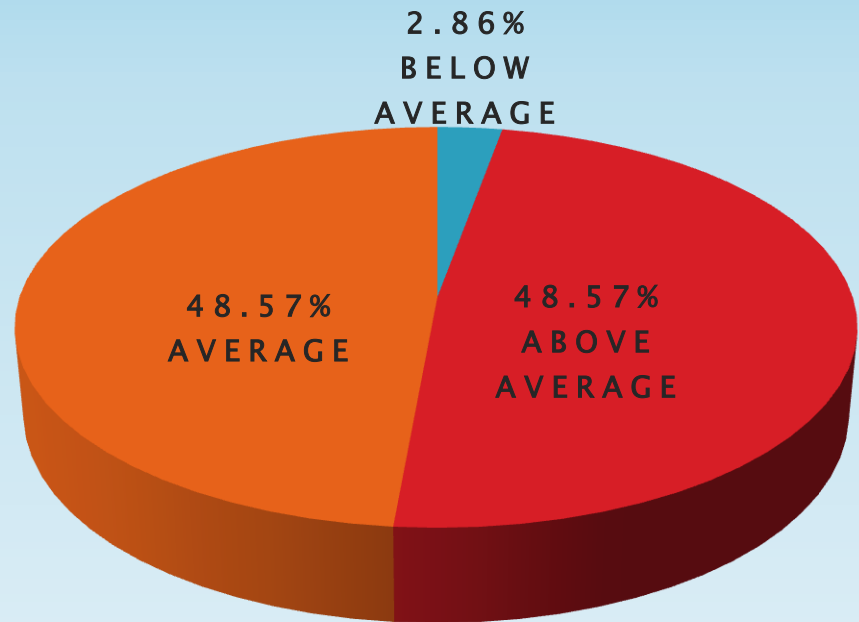
Before COVID-19

Was your business considering an expansion or hiring in next 5 years?

34.30
%
NO

65.70
%
YES

What was your business's future outlook?



DURING GOVERNMENT SHUTDOWN OF ECONOMY

»» What did your business do to survive?

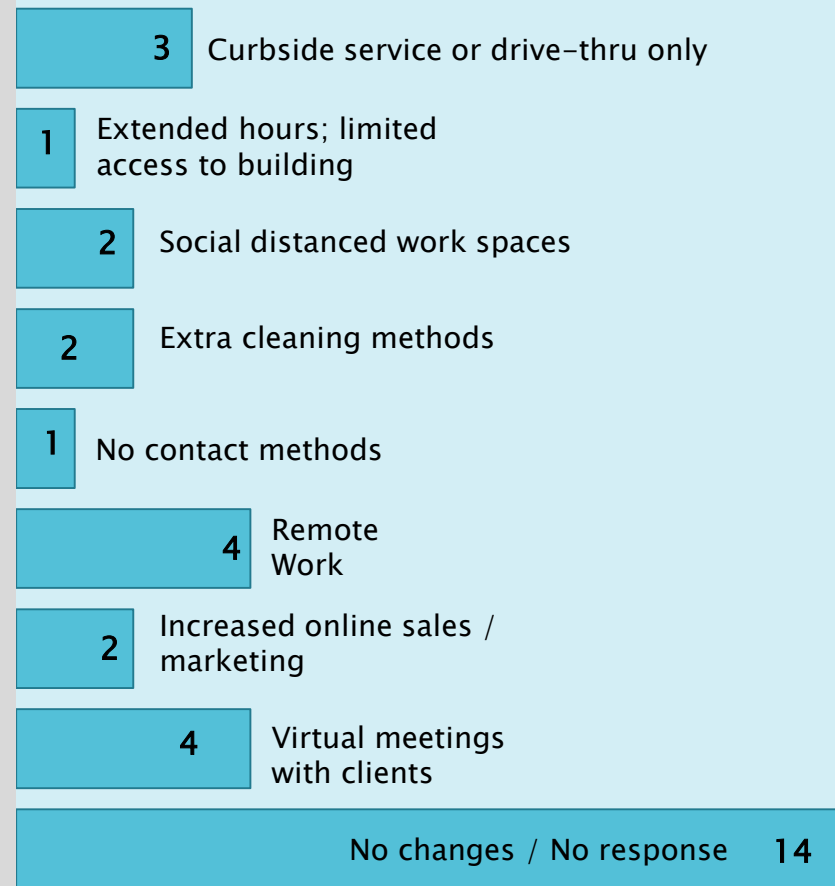
During Shutdown, Businesses

Open or Closed?



28.6 % (or 10 out of 35 businesses)
Remained Open with Reduced Hours
(some are counted in above numbers)

Implemented Changes in Business Model



Applied for Aid?

Type of Federal, State or Local Aid Received

